

ARRI®



Accessories Guide

SKY PANEL®

SkyPanel Accessories Guide

Table of Contents

Lamphead Control

SkyPanel Remote 4

Diffusion

Diffusion Panels 6

Intensifier 8

Remote Phosphor

Remote Phosphor Panels 10

Light Control

SkyBender 12

4-leaf Barndoor 14

FlexDoor 16

Eggcrates 18

Honeycomb 60° 20

Honeycomb 30° 22

Snoot 24

Extra Diffusion Slot 26

Lightbanks

Chimera Lightbank with Frame S30 28

Chimera Lightbank with Frame S60 29

Chimera Shallow Lightbank with Frame S60 30

Chimera Lightbank with Brackets S120 31

Chimera Lantern with Skirt for S30 and S60 32

DoPchoice SnapGrid 40° 34

DoPchoice Snap Grid for S360 36

DoPchoice SnapBag 38

DoPchoice Octagon for S60 40

DoPchoice SnapGrid 40° for SnapBag 42

DoPchoice SnapBox 44

DoPchoice Snoot 45

Mounting

Center Mount Yoke 46

Fixed Center Mount Yoke 47

Double Vertical Yoke 48

SkyPanel Side Handles 49

Short Yoke for S360 50

Battery Adapters

Battery Adapter Plate for Anton/Bauer 52

V-Mount Battery Adapter Plate 53

Cables

DC Cables (XLR) SkyPanel 54

Mains Cables, powerCON TRUE1 55

DC Cables for SkyPanel S360 56

Mains Cables, powerCON for S360 57

Daisy Chain Cables 58

PSU Attachments

Rail Mount Adapter for SkyPanel PSU 60

Super Clamp Adapter for SkyPanel PSU 61

Space Light

Space Light Silk Mounting Adapter S60 62

Safety

Safety Cable (4 mm) 64

Safety Cable (5 mm) 64

Safety Cable (6 mm) 64

Cases and Bags

Molded Cases for S30, S60 and S120 66

Molded Case for S360 68

SkyPanel Accessory Panel Bags 70

SkyPanel Diffusion Kits 72

Resources and Contacts

ARRI Sales Contacts 74

ARRI Service Contacts 76

Online Resources 78

Lamphead Control



SkyPanel Remote

The SkyPanel Remote adds new flexibility and ease-of-use for the SkyPanel. This handheld remote connects to any SkyPanel via a USB cable and allows for full control of the fixture remotely. This is particularly useful if the SkyPanel is high up on a light stand or in a position where the onboard control panel is difficult to access.

- Ergonomic design for handheld use
- Comes with 5 m (16.4 ft) USB Cable and fabric carrying pouch
- Can be used with any SkyPanel lamphead

L2.0012973 SkyPanel Remote



These accessories come with the purchase of the SkyPanel Remote but can also be purchased separately.

L2.0013861 SkyPanel Remote USB Cable, 5 m

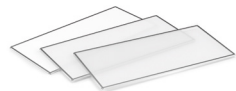


L2.0013945 SkyPanel Remote Carrying Pouch

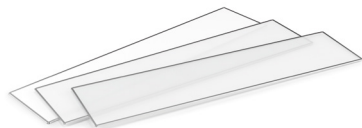
Diffusion Panels



L2.0007327	Lite Diffusion S30
L2.0007325	Standard Diffusion S30
L2.0007326	Heavy Diffusion S30



L2.0003904	Lite Diffusion S60
L2.0003345	Standard Diffusion S60
L2.0003903	Heavy Diffusion S60



L2.0009502	Lite Diffusion S120
L2.0009501	Standard Diffusion S120
L2.0009500	Heavy Diffusion S120



L2.0015016	Lite Diffusion S360-C
L2.0015014	Standard Diffusion S360-C
L2.0015013	Heavy Diffusion S360-C

SkyPanel Lite, Standard and Heavy Diffusion panels have been developed to work perfectly with the SkyPanel-C models. Standard Diffusion (105° HPA) panel offers medium diffusion and produces optimal light output and beam quality. The Lite Diffusion (107° HPA) is less diffuse and therefore allows more light to pass through, while the Heavy Diffusion (114° HPA) is more diffuse and allows less light through, but provides a softer beam quality.

- Produces homogeneous beam of light with great output
- Plastic diffusion material and rugged metal frame

Intensifier



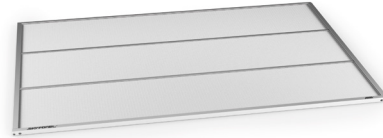
L2.0007823 Intensifier S30-C



L2.0007818 Intensifier S60-C



L2.0009503 Intensifier S120-C



L2.0015022 Intensifier S360-C

This intensifier panel for SkyPanel* increases light output by up to 50% while maintaining a soft, even beam of light. The increase in output is achieved by capturing some of the light going off to the side and refocusing it in a more forward direction. Light output in the center is thereby intensified and yet the quality of the light is retained.

- Increased output up to 50%
- Maintains homogeneous, soft beam of light
- 74° Half Peak Angle

*The intensifier does not work with -RP models of the SkyPanel.

Remote Phosphor

Remote Phosphor Panels



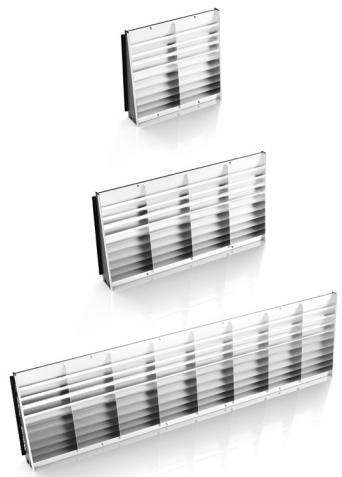
L2.0007520	Remote Phosphor Panel S30 - 2700K - CRI 98
L2.0007521	Remote Phosphor Panel S30 - 3200K - CRI 98
L2.0007522	Remote Phosphor Panel S30 - 4300K - CRI 98
L2.0007523	Remote Phosphor Panel S30 - 5600K - CRI 94
L2.0007524	Remote Phosphor Panel S30 - 6500K - CRI 93
L2.0007789	Remote Phosphor Panel S30 - 10,000K - CRI 90
L2.0007525	Remote Phosphor Panel S30 - Chroma Green



L2.0003347	Remote Phosphor Panel S60 - 2700K - CRI 98
L2.0003348	Remote Phosphor Panel S60 - 3200K - CRI 98
L2.0003349	Remote Phosphor Panel S60 - 4300K - CRI 98
L2.0003350	Remote Phosphor Panel S60 - 5600K - CRI 94
L2.0003346	Remote Phosphor Panel S60 - 6500K - CRI 93
L2.0007778	Remote Phosphor Panel S60 - 10,000K - CRI 90
L2.0003351	Remote Phosphor Panel S60 - Chroma Green

Remote phosphor panels for the SkyPanel-RP models are available in six color temperature versions with excellent color rendition. There is also a chroma green version for lighting green screens available.

- Excellent Color Rendition
- Produces a homogeneous and soft beam of light



SkyBender

L2.0010271 SkyBender S30-C

L2.0009611 SkyBender S60-C

L2.0010352 SkyBender S120-C

The SkyBender for SkyPanel -C versions produces a uniform intensity light field over the length of any surface, transforming the beam by simply sliding into the front of the fixture. This is the perfect accessory for lighting a green screen, creating color wall washes, lighting a translight or backdrop, or evenly lighting a cyclorama.

- Additional Versatility
- +/- 1/6 F-Stop Uniformity
- Smooth & Even Distribution
- Lightweight design
- Slides into the primary accessory slot

SkyBenders cannot be used with -RP versions of SkyPanel.



4-leaf Barndoor

L2.0008187 4-leaf Barndoor S30

L2.0007530 4-leaf Barndoor S60

L2.0010114 4-leaf Barndoor S120

The 4-leaf barndoor for the SkyPanel allows for control of light spill and narrowing of the beam angle. Additional small flaps protect against light leak between the lamphead and the barndoors.

- Lightweight and Rugged Design
- Two safety hooks to hold the barndoor in place
- 4-Leaf design with light leak flaps*
- Slides into outer accessory slot allowing for changing of diffusion panels without the removal of the barndoors

*The S120 Barndoor does not have light leak flaps



FlexDoor

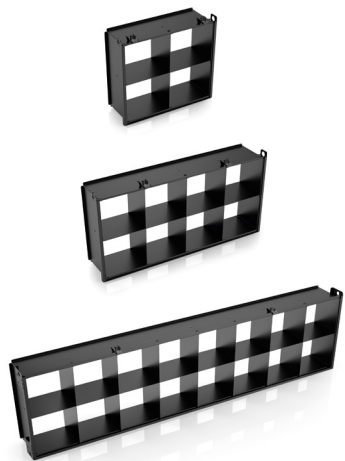
L2.0013877 FlexDoor S30

L2.0013878 FlexDoor S60

L2.0012922 FlexDoor S120

The FlexDoor is a lightweight, fabric barndoor that provides control over light spill and direction. The FlexDoor has a top and bottom leaf that can be positioned and tilted independently.

- Lightweight, fabric barndoor for the S30, S60 and S120
- 2-Leaf design
- Snap-on attachment
- Tilt control of the top and bottom flags



Eggcrates

L2.0008048 4-Chamber Eggcrate S30

L2.0007977 8-Chamber Eggcrate S60

L2.0009690 16-Chamber Eggcrate S120

This eggcrate is 130 mm thick (5.1 inches) and controls light by limiting the half peak angle to 60°. The eggcrates have a 4, 8 and 16 chamber design for the S30, S60 and S120 - respectively.

- 4, 8 and 16 chambers design allows for minimal light loss
- 130 mm (5.1 inches) thick
- 60° HPA
- Rugged design
- Extra accessory slot for stacking other SkyPanel accessories
- Slides into the primary accessory slot

Light Control

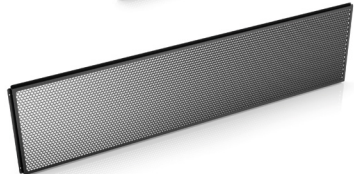
Honeycomb 60°



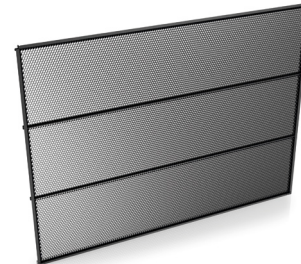
L2.0008064 Honeycomb 60° S30



L2.0008058 Honeycomb 60° S60



L2.0009561 Honeycomb 60° S120



L2.0014979 Honeycomb 60° S360

The 60° Honeycomb for the SkyPanel controls the light by reducing the beam angle to approximately 60 degrees.

- Honeycomb design reduces multiple shadows
- 14 mm (0.6 inches) thick
- ~60° HPA
- Slides into the primary accessory slot

Light Control

Honeycomb 30°

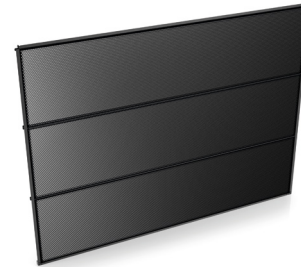
L2.0008065 Honeycomb 30° S30



L2.0008059 Honeycomb 30° S60



L2.0009562 Honeycomb 30° S120



L2.0014978 Honeycomb 30° S360

The 30° Honeycomb for the SkyPanel controls the light by reducing the beam angle to approximately 30 degrees.

- Honeycomb design reduces multiple shadows
- 14 mm (0.6 inches) thick
- ~30° HPA
- Slides into the primary accessory slot



Snoot

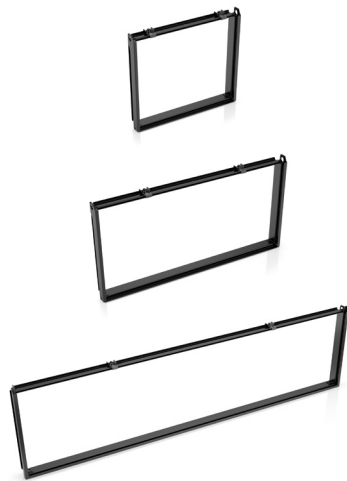
L2.0008019 Snoot S30

L2.0007999 Snoot S60

L2.0009680 Snoot S120

This SkyPanel snoot is 130 mm thick (5.1 inches) and controls light, not allowing spill light from the sides of the lamphead.

- Straight wall snoot with one large chamber
- 130 mm (5.1 inches) thick
- Rugged design
- Extra accessory slot for stacking other SkyPanel accessories
- Slides into the primary accessory slot



Extra Diffusion Slot

L2.0008189 Extra Diffusion Slot S30

L2.0008188 Extra Diffusion Slot S60

L2.0009681 Extra Diffusion Slot S120

The SkyPanel Extra Diffusion Slot slides into the primary accessory slot of the SkyPanel and allows for stacking for multiple diffusers.

- Fits all SkyPanel S30, S60 or S120 Diffusers
- Top safety latch
- Thin profile
- Slides into the primary accessory slot or the front of the SkyPanel Snoot or Egg Crate
- Extra accessory slot for stacking other SkyPanel accessories

Lightbanks



Chimera Lightbank with Frame S30

The Lightbank and Frame for the S30 by Chimera is a professional grade soft box that increases the light aperture of the SkyPanel by roughly 100%. The lightbank comes with several diffusions and folds away for storage. The frame slides directly into the SkyPanel accessory slot.

- Specially made for SkyPanel S30
- Professional Grade Construction
- Small Video Pro front
- Includes: Lightbank, frame and three diffusions

L2.0008196 Chimera Lightbank with Frame S30



Chimera Lightbank with Frame S60

The Lightbank and Frame for the S60 by Chimera is a professional grade soft box that increases the light aperture of the SkyPanel by roughly 100%. The lightbank comes with several diffusions and folds away for storage. The frame slides directly into the SkyPanel accessory slot.

- Specially made for SkyPanel S60
- Professional Grade Construction
- Medium Video Pro front
- Includes: Lightbank, frame and three diffusions

L2.0008197 Chimera Lightbank with Frame S60



Lightbanks



Chimera Shallow Lightbank with Frame S60

The Shallow Lightbank and Frame for the S60 by Chimera is a professional grade soft box that increases the light aperture of the SkyPanel by roughly 100%. This Shallow Lightbank does not take up as much space as the standard S60 lightbank. The lightbank comes with several diffusions and folds away for storage. The frame slides directly into the SkyPanel accessory slot.

- Specially made for SkyPanel S60
- Half as deep as standard lightbank
- Internal baffle Included
- Professional Grade Construction
- Medium Video Pro front
- Includes: Lightbank, frame and three diffusions

L2.0008195 Chimera Shallow Lightbank with Frame S60



Chimera Lightbank with Brackets S120

The Lightbank and Brackets for the S120 by Chimera is a professional grade soft box that increases the light aperture of the SkyPanel by roughly 100%. The lightbank comes with several diffusions and folds away for storage. The brackets mount to the side of the SkyPanel outer frame.

- Specially made for SkyPanel S120
- Professional Grade Construction
- Large Video Pro front
- Includes: Lightbank, 2 brackets and three diffusions

L2.0013180 Chimera Lightbank with Brackets S120



Chimera Lantern with Skirt for S30 and S60

The SkyPanel Lantern made by Chimera is a great way to get near omni-directional light from the SkyPanel. The lantern easily attaches to the front of the SkyPanel and forms a ballon shape that produces soft light in almost all directions. This product comes with mounting brackets and a skirt for controlling the light.

- Comes with lantern, brackets and skirt
- Near full omni-directional light
- Folds down for easy transportation
- Skirt allows for light control
- Great for overhead lighting use

L2.0015899 Chimera Lantern with Skirt for S30

L2.0015900 Chimera Lantern with Skirt for S60



DoPchoice SnapGrid 40°

L2.0008142 DoPchoice SnapGrid 40° for S30



L2.0008144 DoPchoice SnapGrid 40° for S60



L2.0010382 DoPchoice SnapGrid 40x60° for S120

The SnapGrid for the SkyPanel by DoPchoice attaches directly to the front of the SkyPanel and provides directional light control. The SnapGrid easily folds away for storage.

- Specially made for SkyPanel S30, S60 or S120
- S30 or S60 HPA: ~40°
- S120 HPA: ~40x60°
- No Mounting Hardware Required



DoPchoice Snap Grid for S360

The SnapGrid by DoPchoice for the SkyPanel S360-C attaches directly to the front of the SkyPanel and provides directional light control. In addition, the SnapGrid for S360 also attaches to the SnapBox for S360 or the Snoot for S360. The SnapGrid easily folds away for storage.

- Specially made for SkyPanel S360-C
- Half Peak Angle: ~40°
- No Mounting Hardware Required

L2.0016383 DoPchoice SnapGrid for S360



DoPchoice SnapBag

L2.0008141 DoPchoice SnapBag for S30



L2.0008145 DoPchoice SnapBag for S60



L2.0010383 DoPchoice SnapBag for S120

The SnapBag for the SkyPanel by DoPchoice attaches directly to the front of the SkyPanel and creates a larger aperture with beautiful soft light. The SnapBag easily folds away for storage.

- Specially made for SkyPanel S30, S60 or S120
- Comes with 1/2 Grid Cloth Diffusion
- No Mounting Hardware Required

DoPchoice Octagon for S60



L2.0016160 DoPchoice Octa 7 for S60 incl. Double Bracket

L2.0016163 DoPchoice Octa 5 for S60 incl. Double Bracket

L2.0016165 DoPchoice Octa 7 Light Bank for S60 (no Bracket)

L2.0016159 DoPchoice Octa 5 Light Bank for S60 (no Bracket)

The DoPchoice Octa for SkyPanel uses a large aperture and two S60s to generate extremely soft, yet bright light. The specially design bracket holds two S60s directly in the center of either a 7 ft or 5 ft diameter octagon shaped light bank. The DoPchoice Octa is perfect for overhead lighting or beauty lighting.

- Robust aluminum bracket for two S60s
- 5 ft (1.5 m) or 7 ft (2.1 m) diameter Octas available
- Super bright and super soft
- Mounts to any Junior (28 mm) receiver
- No SkyPanel stirrups required
- Perfect for overhead, beauty, and still photography lighting



DoPchoice SnapGrid 40° for SnapBag

L2.0008140 DoPchoice SnapGrid 40° for SnapBag S30

L2.0008143 DoPchoice SnapGrid 40° for SnapBag S60

L2.0010381 DoPchoice SnapGrid 40° for SnapBag S120

The SnapGrid for the SnapBag by DoPchoice attaches to the front of the SkyPanel SnapBag and provides directional light control. The SnapGrid easily folds away for storage.

- Specially made for SkyPanel S30, S60 or S120 SnapBag
- HPA: ~40°
- No Mounting Hardware Required

Lightbanks



DoPchoice SnapBox

The SnapBox by DoPchoice for SkyPanel S360 is a deep light box for illuminating large areas for a wide beam spread. The SnapBox attaches to the front of the S360 and comes with diffusions and black covers for controlling the light.

- Light box with 5 diffused surfaces
- 400 mm (15.7 inches) depth
- No mounting hardware required
- Comes with Magic Cloth and Black sides for control the light
- Folds for easy storage

L2.0016382 DoPchoice SnapBox for S360 w/ skirt



DoPchoice Snoot

The Snoot by DoPchoice for SkyPanel S360 is a fabric snoot which controls the light by preventing spill off to the sides of the fixture. The snoot is 150 mm deep and folds up for easy storage.

- Straight walled, fabric snoot with one large chamber
- 150 mm (5.9 inches) depth
- No mounting hardware required
- Comes with 3 Diffusions (1/4 & 1/2 Grid, and Magic Cloth)
- Folds for easy storage

L2.0016381 DoPchoice Snoot for S360 (w/3 Diffusions)

Mounting



Center Mount Yoke

The Center Mount Yoke is a ball-in-socket yoke that allows for positioning the SkyPanel in almost any orientation including vertically. The Center Mount Yoke replaces the traditional stirrup and slides on to the rail mounting system located on the back of the SkyPanel.

- Ball-in-socket design
- 28 mm (Junior) Spigot with long "goose neck"
- +/- 90° Movement
- Tool-less attached to the rail mounting system on the SkyPanel
- Works with the SkyPanel S30, S60 and S120

L2.0008078 Center Mount Yoke



Fixed Center Mount Yoke

The Fixed Center Mount Yoke is a fixed 28 mm spigot that allows for direct attachment from the back of the SkyPanel to mounting hardware. The Fixed Center Mount Yoke replaces the traditional stirrup and slides on to the rail mounting system located on the back of the SkyPanel. Great for low ceilings or pointing the SkyPanel straight down or straight forward (i.e. a wall of SkyPanels)

- 28 mm (Junior) Spigot
- Tool-less attached to the rail mounting system on the SkyPanel
- Works with the SkyPanel S30, S60 and S120
- Comes with two safety loop brackets

L2.0008080 Fixed Center Mount Yoke

Mounting



Double Vertical Yoke

The Double Vertical Yoke allows for mounting of two SkyPanel fixtures one directly above the other.

- High strength Aluminum yoke
- Independent tilt of both lampheads
- 28 mm (Junior) Spigot
- High strength tilt locks

L2.0008098	Double Vertical Yoke S60
L2.0008184	Double Vertical Yoke S30
L2.0010180	Double Vertical Yoke S120



SkyPanel Side Handles

The SkyPanel Side Handles attach to the "ears" of any SkyPanel S30/S60/S120. The handles improve fixture handling when using the Center Mount Yoke. This is the perfect accessory for the SkyPanel S120.

- 2 plastic handles for the SkyPanel S30, S60 or S120
- perfect when used with the SkyPanel Center Mount Yoke
- connects to stirrup mounting "ears"
- Safety attachment integrated into design
- Cannot be used in conjunction with the standard or pole op yoke



L2.0014136	SkyPanel Side Handles (pair)
------------	------------------------------



Short Yoke for S360

The Short Yoke for the SkyPanel S360-C is designed for hanging the fixture facing downward. Hugging the back back of the fixture, the Short Yoke provides a reduced distance between the fixture and the mounting point. The Short Yoke easily replaces the standard yoke for the S360 with the removal of four bolts.

- High strength aluminum yoke
- 28 mm (Junior) Spigot
- High strength tilt locks
- Low profile for hanging the S360 in the ceiling facing downward

L2.0015929 Short Yoke for S360

Battery Adapters



Battery Adapter Plate for Anton/Bauer

The Battery Adapter Plate for Anton/Bauer allows for the attachment of two Gold Mount style batteries to the SkyPanel. With a short cable, the battery adapter makes the SkyPanel truly mobile. Both batteries are required to supply the correct voltage to the lamphead.

- Supports two Gold Mount Batteries for Anton/Bauer (in series)
- SkyPanel Quick Release System
- On / Off switch
- 4-pin XLR output
- Includes 0.5 m and 3 m 4-Pin XLR
- Battery Min. Recommendation: 14.4V, 100 Wh Capacity

L2.0008071 Battery Adapter Plate for Anton/Bauer*

*Only for S30, S60 or S120 SkyPanels.



V-Mount Battery Adapter Plate

The V-Mount Battery Adapter for SkyPanel allows for the attachment of two V-Mount style batteries to the SkyPanel. With a short cable, the battery adapter makes the SkyPanel truly mobile. Both batteries are required to supply the correct voltage to the lamphead.

- Supports two V-Mount Batteries (in series)
- SkyPanel Quick Release System
- On / Off switch
- 4-pin XLR output
- Includes 0.5 m and 3 m 4-Pin XLR
- Battery Min. Recommendation: 14.4V, 100 Wh Capacity

L2.0008070 V-Mount Battery Adapter Plate*

*Only for S30, S60 or S120 SkyPanels.

DC Cables

DC Cables (XLR) SkyPanel

The DC Cable connects the SkyPanel PSU to the SkyPanel lamphead. Only for S30, S60 and S120 SkyPanels.



- 3-Pin XLR Female to 3-Pin XLR Male
- Special SkyPanel 10 mm Diameter Cable

L2.0007492	DC Cable 0.5 m (XLR) SkyPanel
L2.0007491	DC Cable 1 m (XLR) SkyPanel
L2.0007493	DC Cable 3 m (XLR) SkyPanel
L2.0007494	DC Cable 10 m (XLR) SkyPanel
L2.0007860	DC Cable 15 m (XLR) SkyPanel

AC Cables

Mains Cables, powerCON TRUE1

The Mains Cables connect the SkyPanel PSU to a mains power outlet (110 - 250 V AC - 50 / 60 Hz). Only for S30, S60 and S120 SkyPanels.



- Length: 3 m (9.8 ft.)
- powerCON TRUE1 Connector
- Mains Connector (Schuko, Edison, Chinese)
- Insulated rubber cable H07RN-F 3G1,5, EN
- Rubber insulated cable 3xAWG16, UL (Edison)

L2.0007516	Mains Cable, 3 m, powerCON TRUE1 / Schuko
L2.0007515	Mains Cable, 3 m, powerCON TRUE1 / Edison
L2.0007514	Mains Cable, 3 m, powerCON TRUE1 / Chinese
L2.0010231	Mains Cable, 3 m, powerCON TRUE1 / Japanese
L2.0005974	Mains Cable, 3 m, powerCON TRUE1 / Bare Ends

DC Cables

DC Cables for SkyPanel S360



The DC Cable connects the S360 PSU to the S360 lamphead.

- 4-Pin locking female to 4-Pin locking male connectors
- High current cable specially for SkyPanel S360

L2.0016030	DC Cable 5 m (5-Pin) SkyPanel S360
L2.0016031	DC Cable 10 m (5-Pin) SkyPanel S360
L2.0016032	DC Cable 15 m (5-Pin) SkyPanel S360

AC Cables



Mains Cables, powerCON for S360

The Mains Cables connect the SkyPanel PSU to a mains power outlet (110 - 250 V AC - 50 / 60 Hz).

- Length: 3 m (9.8 ft.)
- powerCON 32 A Connector
- Mains Connector (Schuko, Edison, Chinese)
- Insulted rubber cable H07RNF 3G2,5
- Rubber insulted cable SJO(OW) 3x12AWG (Edison)

L2.0015784	Mains cable S360, 3 m, powerCON 32A / Schuko
L2.0015785	Mains cable S360, 3 m, powerCON 32A / Edison
L2.0015786	Mains cable S360, 3 m, powerCON 32A / Chinese
L2.0015787	Mains cable S360, 3 m, powerCON 32A / Japanese
L2.0015788	Mains cable S360, 3 m, powerCON 32A / Bare Ends



Daisy Chain Cables

The Daisy Chain Cable allows for SkyPanel PSU to PSU mains power connection. A SkyPanel PSU is thereby able to pass AC power through to another PSU.

- Male to female powerCON TRUE1 connector
- 3 m in length
- 16 A max current

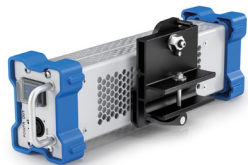
L2.0010633 Daisy Chain Cable, 3 m, powerCON TRUE1 / CE*

L2.0012548 Daisy Chain Cable, 3 m, powerCON TRUE1 / UL*

L2.0012663 Daisy Chain Cable, 3 m, powerCON TRUE1 / Japan*

*Only for S30, S60 or S120 PSU.

PSU Attachments



Rail Mount Adapter for SkyPanel PSU

The Rail Mount Adapter attaches to the SkyPanel PSU (no tools required) and allows for the mounting of the PSU to the rail mount system on the back of the SkyPanel lamphead. If an all-in-one system is required, this accessory will accomplish the task.

- Attaches to SkyPanel PSU or Battery Adapter Plates
- Tool-less system allows for quick attachment and release from the PSU
- Slides onto rail mount system on the back of SkyPanel

L2.0008082 Rail Mount Adapter for SkyPanel PSU*

*Only for S30, S60 or S120 PSU.



Super Clamp Adapter for SkyPanel PSU

The Super Clamp Adapter attaches to the back of the SkyPanel PSU (no tools required) and allows for the mounting of the PSU to a wide variety of objects including light stand stems and truss.

- Attaches to SkyPanel PSU or Battery Adapter Plates
- Comes with Super Clamp for mounting to a variety of objects
- Tool-less system allows for quick attachment and release from the PSU

L2.0006921 Super Clamp Adapter for SkyPanel PSU

Space Light



Space Light Silk Mounting Adapter S60

The Space Light Silk Mounting Adapter slides on to the spigot of the SkyPanel S60 and allows for the attachment of a standard 5K/6K space light silk and skirt. This simple system fit a wide variety of industry standard space light accessories.

- Main collar slides on to 28 mm (Junior) Spigot of the SkyPanel S60
- Three aircraft cables and carabineers allow for quick and easy attachment of industry standard space light accessories
- Available hole for safety chain



L2.0014566 Space Light Silk Mounting Adapter S60-Universal

Safety Cables

The 4, 5 and 6 mm diameter Safety Cable will provide an extra level of safety once attached properly to the SkyPanel.



- Length: 1 m (3.3 ft.)
- Diameter: 4 mm, 5 mm & 6 mm
- Loop at one end, a carabiner at the other
- Max Load: 20 kg, 25 kg, & 60 kg

L2.76990.0	Safety Cable (4 mm)
------------	---------------------

L2.80864.0	Safety Cable (5 mm)
------------	---------------------

L2.80866.0	Safety Cable (6 mm)
------------	---------------------

* These products are not available for the US market.

Molded Cases

Cases for S30, S60 and S120



L2.0010639	Case for SkyPanel S30 - Molded Single
L2.0010640	Case for SkyPanel S30 - Molded Double
L2.0015848	Case for SkyPanel S60 - Molded Single V2
L2.0013695	Case for SkyPanel S120 - Molded, Manual
L2.0013694	Case for SkyPanel S120 - Molded, Center Mount

These heavy-duty molded cases for the S30, S60 and S120 are perfect for transporting the SkyPanel without the risk of damage. Several compartments keep the SkyPanel and its parts organized and protected.

- Robust plastic molded case for the SkyPanel S30, S60 and S120
- Single Cases:
 - Holds one SkyPanel lamphead
 - Additional space for SkyPanel PSU, 3 diffusion panels, power cables, and PSU Rail Mount
- Double Case:
 - Holds two SkyPanel S30 lampheads
 - Additional space for 2 S30 PSUs, 6 diffusion panels, power cables, and 2 PSU Rail Mounts
- Two wheels and handles for convenient mobility

Molded Cases

Case for S360

The heavy-duty, hard walled case for the S360 is perfect for transporting the SkyPanel and many accessories without the risk of damage. Several slots and compartments keep the SkyPanel and its parts organized and protected.

- Robust, hard case for the SkyPanel S360
- Holds SkyPanel S360 with yoke and spigot attached
- 5 Slots for Diffusions and/or Honeycombs
- Compartments for accessories
- Multiple handles for four wheels for hassle-free moving
- Two door design for easy access to all parts

L2.0016354 Case for SkyPanel S360 - Hard Single

SkyPanel Accessory Panel Bags



SkyPanel Accessory Panel Bags

L2.0008309 Accessory Panel Bag S30

L2.0008306 Accessory Panel Bag S60

L2.0013780 Accessory Panel Bag S120

The SkyPanel Accessory Panel Bag provides protection and easy transportation of SkyPanel diffusions, intensifiers and/or honeycomb accessories. This reinforced, robust bag allows for 4 diffusion panels to be stored at one time.

- Carrying bag for SkyPanel S30, S60 or S120 accessories
- Reinforced black fabric with Velcro fastener incl. carrying handle
- 4 partitions for max. 4 panels or honeycombs (e.g. 1 x Diffusion or RP-Panel, 1 x Intensifier, 2 x Honeycombs)

SkyPanel Diffusion Kits



SkyPanel Diffusion Kits

L0.0008468 Diffusion Kit S30

L0.0008461 Diffusion Kit S60

L0.0015070 Diffusion Kit S120



The SkyPanel Diffusion Kits are a convenient way to complete your set of SkyPanel diffusions and intensifier. The kit includes the Lite and Heavy Diffusion and Intensifier. It comes packaged in the padded and robust SkyPanel Accessory Panel Bag for easy transportation.

- Includes Lite & Heavy Diffusion, Intensifier and Accessory Panel Bag
- Great for completing your kit with one purchase

Resources and Contacts

ARRI Sales Contacts

Europe, Middle East, Africa, India

Arnold & Richter Cine Technik

GmbH & Co. Betriebs KG (Sales & Service)

Ernst-Augustin-Strasse 12, 12489 Berlin, Germany

sales-lighting@arri.de

Tel: +49 (0)30 678 233 0, Fax: +49 (0)30 678 233 99

ARRI Italia S.r.l. (Sales & Service)

via Achille Grandi, 50

20017 Rho (Milan), Italy

info@arri.it

Tel: +39 02 262 271 75, Fax: +39 02 242 1692

Americas

ARRI Inc./West Coast & Mexico (Sales & Service)

600 North Victory Blvd., Burbank, CA 91502-1639, USA

info@arri.com

Tel: +1 818 841 7070, Fax: 1 818 848 4028

ARRI Inc. / East Coast (Sales & Service)

617 Route 303, Blauvelt, NY 10913-1109, USA

info@arri.com

Tel: +1 845 353 1400, Fax: +1 845 425 1250

ARRI Inc. / Central & Southern America (Sales)

2385 Stirling Road, Ford Lauderdale, FL 33312, USA

ventas@arri.com

Tel: +1 954 322 4545, Fax: +1 954 322 4188

ARRI Canada Limited (Sales & Service)

1200 Aerowood Drive,

Unit 29 Mississauga, Ontario L4W 2S7

info@arri.com

Tel: +1 416 255 3335, Fax: +1 416 255 3399

Asia

ARRI Asia Limited (Sales & Service)

41/F, One Kowloon, 1 Wang Yuen Street

Kowloon Bay, Hong Kong

info@arriasia.hk

Tel : +852 2571 6288, Fax : +852 2875 9181

ARRI China (Beijing) Co. Ltd. (Sales & Service)

Chaowai SOHO Tower C, 6/F, 0628/0656

Chaowai Dajie Yi 6, Beijing, China

store@arri.cn

Tel : +86 10 59009680, Fax : +86 10 59009679

Australia / New Zealand

ARRI Australia Pty Ltd (Sales & Service)

Level 1, Unit 1, 706 Mowbray Road,

Lane Cove NSW 2066, Sydney, Australia

info@arri.com.au

Tel: +61 2 9855 4300, Fax: +61 2 9855 4301

ARRI Service Contacts

Zone	Availability	Service Center	E-Mail	Telephone Hotline
1	Monday – Thursday: 7:00 – 17:00 (CET) Friday: 7:00 – 15:00 (CET)	Stephanskirchen, Germany Arnold & Richter Cine Technik	service-lighting@arri.de	+49 (0)8036 3009 3009
2	Monday – Friday: 09:00 – 17:30 (EST)	New York, USA ARRI Inc. East Coast	service-lighting@arri.com	+1 845 353 1400
	Monday – Friday: 08:30 – 17:15 (PST)	Burbank, USA ARRI Inc. West Coast	service-lighting@arri.com	+1 818 841 7070
3	Monday – Friday: 09:00 – 18:00 (HKT)	Hong Kong, China ARRI Asia Limited	service@arriasia.hk	+852 2537 4266
	Monday – Friday: 09:00 – 18:00 (CST)	Beijing, China ARRI China (Beijing) Co. Ltd.	service@arri.cn	+86 5900 9680
	Monday – Friday: 08:00 – 17:00 (AEST)	Sydney, Australia ARRI Australia Pty Limited	service-lighting@arri.com.au	+61 2 9855 4305

Zone 2 - Americas

Burbank ● New York ●

Zone 1 - EMEA

● Stephanskirchen

Zone 3 - Asia Pacific

● Beijing
● Hong Kong

● Sydney

Online Resources

Downloads

SkyPanel Data Sheets	www.arri.com/goto/skypanel/downloads
SkyPanel Manual	www.arri.com/goto/skypanel/downloads
SkyPanel DMX Protocol	www.arri.com/goto/skypanel/downloads
SkyPanel Brochure	www.arri.com/goto/skypanel/downloads

Software Tools

ARRI Lighting Service Manager	www.arri.com/goto/lighting/tools
Photometric Calculator App	www.arri.com/goto/lighting/tools

This ARRI SkyPanel Accessory Guide (Ident.-Nr.: 80.0008406 / L03085) is published by Arnold & Richter Cine Technik, September 2017 © ARRI/2017. Technical data and offerings are subject to change without notice. All rights reserved. Without any warranty. Not binding 09/2017.

ARRI, ARRI ARRI, the ARRI Logo, ARRIMAX, ARRISUN, EB, EBB, L-Series, MAX Technology, M-Series, POCKETPAR, True Blue, SkyPanel, SKYPANEL, T 12 and T 24 are registered Trademarks of Arnold & Richter Cine Technik GmbH & Co. Betriebs KG.

Arnold & Richter Cine Technik GmbH & Co. Betriebs KG · Türkenstrasse 89 · 80799 Munich
Tel +49 (0)89 3809 0 · Fax +49 (0)89 3809 1245 · www.arri.com

SKYPANEL[®]

SOFT LIGHTING | REDEFINED

Explore the SkyPanel: www.arri.com/skypanel