



WORLDWIDE LEADER OF BACKGROUNDS AND PHOTOGRAPHIC PRODUCTS

[SAVAGEUNIVERSAL.COM](http://SAVAGEUNIVERSAL.COM)

## WE'RE THRILLED TO ANNOUNCE SAVAGE UNIVERSAL WAS ACQUIRED BY THE VITEC GROUP LATE 2021!

The Vitec Group has a renowned reputation as the leading global provider of premium branded hardware products and software solutions to the growing content creation market. We are excited to be a member of an outstanding family of brands under the company. Together, we pledge to continue to propel the imaging industry forward with quality and innovation.

We look forward to helping to fuel your creativity by continuing to offer our reliable equipment at affordable prices, and it is our pleasure to do so with individualized service.

Whether you are a veteran studio photographer, budding filmmaker, or spontaneous content creator, we want you to know you'll find convenient options for expanding your toolset inside our 2022 product catalog. Please also visit our website for additional product information, blog tips and tutorials on how to maximize your resources and improve your craft. Thank you for choosing to #ShootwithSavage!

Richard Reiser, COO Lighting

Vitec Imaging Solutions



### FOLLOW US ON SOCIAL MEDIA!

Get set tips, discover new gear & find inspiration for your next photo shoot!



#SHOOTWITHSAVAGE  
#STYLEYOURSEAMLESS  
#SAVAGEUNIVERSAL

# INDEX

PHOTOGRAPHY BACKGROUNDS	4
SEAMLESS BACKGROUND PAPER	6
VINYL BACKGROUNDS	10
CANVAS BACKGROUNDS	12
COLLAPSIBLE BACKGROUNDS	14
BACKDROP TRAVEL KITS	16
FABRIC BACKGROUNDS	18
MUSLIN BACKGROUNDS	20
PRINTED VINYL BACKGROUNDS	22
PRINTED BACKGROUND PAPER	23
TRANSLUM™	24
GREEN SCREENS	25
LED LIGHTING	26
GRIP EQUIPMENT	36
STUDIO EQUIPMENT	44
MODIFIERS	49
BACKGROUND ACCESSORIES	51
STORAGE SOLUTIONS	53
BACKGROUND STANDS	54
PRODUCT PHOTOGRAPHY	56
TECH ACCESSORIES	57
MAT & MOUNT BOARD	58

## PHOTO CREDITS

COVER: CUSI TAYLOR – ORCHID SEAMLESS PAPER    INSIDE COVER: THREEFOLD – DEEP YELLOW SEAMLESS PAPER, PECAN SEAMLESS PAPER, CORAL SEAMLESS PAPER    PAGES 4-5: SYDNEY WALTON – CORAL SEAMLESS PAPER    PAGE 12: JESSIELYN PALUMBO – ALPINE PAINTED CANVAS    PAGE 13: CUSI TAYLOR – ASH PAINTED CANVAS    PAGE 14: MIGUEL QUILES – INDIGO NIGHTS COLLAPSIBLE    PAGE 16: SYDNEY WALTON – BLACK BACKDROP TRAVEL KIT    PAGE 18: RYAN WALSH – POWDER BLUE POLYESTER    PAGE 20: MIKE MCGEE – SEDONA RED CRUSHED MUSLIN    PAGE 21: MIKE MCGEE – MILANO HAND PAINTED MUSLIN, ALBA SOLER – DARK GRAY WASHED MUSLIN, RYAN WALSH – MOCHA BISQUE CRUSHED MUSLIN    PAGE 22: MIGUEL QUILES – TEXTURED BROWN PRINTED VINYL    PAGE 23: RYAN WALSH – WORN PLANKS PRINTED PAPER    PAGES 36-39: THREEFOLD – C-STAND    PAGE 44: RYAN WALSH – 700W LED STUDIO KIT    PAGE 59: CUSI TAYLOR – ORCHID SEAMLESS PAPER

*Every reasonable effort was made to ensure the accuracy of the information provided in this catalog. However, Savage Universal reserves the right to change product information and specs at any time without notice, and makes no warranties as to the accuracy of the information printed.*



#SHOOTWITHSAVAGE

# PHOTOGRAPHY BACKGROUNDS



We offer a product range that's unsurpassed for its selection, quality and value. From smooth seamless paper in every color under the sun to hand painted canvas that delivers a custom look with every piece, we make the products that photographers rely on for creating perfect backgrounds for virtually every project.

Just starting out and need a flexible solution for a small home studio? We have pop-open backgrounds that fold away compactly. Upgrading your high traffic commercial studio and looking for the most professional backdrop set? We have heavy-duty, durable vinyl that will stand the test of time.

Plain, printed, patterned or painted, you'll find it with Savage!

**TIP:**  
*Avoid shoe prints on paper by applying a layer of tape to the soles of your model's shoes.*

EGG NOG SEAMLESS PAPER

# SEAMLESS BACKGROUND PAPER

Savage Widetone Seamless Background Paper has been the professional photographer's top choice for creating smooth, quality backgrounds for many decades. The high quality, fine-tooth, non-reflective surface makes it ideal for photo and video backgrounds, retail displays, crafting and theater productions.



	MIDSIZE					EXTRA WIDE
	26" x 36' (66cm x 11m)	53" x 36' (1.35m x 11m)	86" x 36' (2.18m x 11m)	107" x 36' (2.72m x 11m)	107" x 150' (2.72m x 45.7m)	140" x 105' (3.56m x 32m)
1 SUPER WHITE	1-2612	1-1253	1-86	1-12	1-50	1-140
2 SKY BLUE	2-2612	2-1253	2-86	2-12	2-50	
3 CORAL	3-2612	3-1253	3-86	3-12	3-50	
4 SAND	4-2612	4-1253	4-86	4-12	4-50	
5 ULTRAMARINE	5-2612	5-1253	5-86	5-12	5-50	
6 CRIMSON	6-2612	6-1253	6-86	6-12	6-50	
8 PRIMARY RED	8-2612	8-1253	8-86	8-12	8-50	
9 STONE GRAY	9-2612	9-1253	9-86	9-12	9-50	
12 STUDIO GRAY	12-2612	12-1253	12-86	12-12	12-50	
16 CHESTNUT	16-2612	16-1253	16-86	16-12	16-50	
17 SIENNA	17-2612	17-1253	17-86	17-12	17-50	
18 EVERGREEN	18-2612	18-1253	18-86	18-12	18-50	
19 EGG NOG	19-2612	19-1253	19-86	19-12	19-50	
20 BLACK	20-2612	20-1253	20-86	20-12	20-50	20-140
23 SEA GREEN	23-2612	23-1253	23-86	23-12	23-50	
24 ORANGE	24-2612	24-1253	24-86	24-12	24-50	
25 BEIGE	25-2612	25-1253	25-86	25-12	25-50	
27 THUNDER GRAY	27-2612	27-1253	27-86	27-12	27-50	
29 ORCHID	29-2612	29-1253	29-86	29-12	29-50	
30 GULF BLUE	30-2612	30-1253	30-86	30-12	30-50	
31 BLUE JAY	31-2612	31-1253	31-86	31-12	31-50	
34 OLIVE GREEN	34-2612	34-1253	34-86	34-12	34-50	
37 TULIP	37-2612	37-1253	37-86	37-12	37-50	
38 CANARY	38-2612	38-1253	38-86	38-12	38-50	
40 MINT GREEN	40-2612	40-1253	40-86	40-12	40-50	
41 BLUEMIST	41-2612	41-1253	41-86	41-12	41-50	
43 MARMALADE	43-2612	43-1253	43-86	43-12	43-50	
46 TECH GREEN	46-2612	46-1253	46-86	46-12	46-50	46-140
47 BABY BLUE	47-2612	47-1253	47-86	47-12	47-50	
50 WHITE	50-2612	50-1253	50-86	50-12	50-50	
51 BONE	51-2612	51-1253	51-86	51-12	51-50	
53 PECAN	53-2612	53-1253	53-86	53-12	53-50	
56 FASHION GRAY	56-2612	56-1253	56-86	56-12	56-50	
57 GRAY TINT	57-2612	57-1253	57-86	57-12	57-50	
58 STUDIO BLUE	58-2612	58-1253	58-86	58-12	58-50	
60 FOCUS GRAY	60-2612	60-1253	60-86	60-12	60-50	
61 TV GRAY	61-2612	61-1253	61-86	61-12	61-50	
62 PURPLE	62-2612	62-1253	62-86	62-12	62-50	
64 BLUE JEAN	64-2612	64-1253	64-86	64-12	64-50	
66 PURE WHITE	66-2612	66-1253	66-86	66-12	66-50	
67 RUBY	67-2612	67-1253	67-86	67-12	67-50	
68 TEAL	68-2612	68-1253	68-86	68-12	68-50	
70 STORM GRAY	70-2612	70-1253	70-86	70-12	70-50	70-140
71 DEEP YELLOW	71-2612	71-1253	71-86	71-12	71-50	
74 SMOKE GRAY	74-2612	74-1253	74-86	74-12	74-50	
75 TRUE BLUE	75-2612	75-1253	75-86	75-12	75-50	
76 MOCHA	76-2612	76-1253	76-86	76-12	76-50	
79 ALMOND	79-2612	79-1253	79-86	79-12	79-50	
80 COCOA	80-2612	80-1253	80-86	80-12	80-50	
81 RUSTIC	81-2612	81-1253	81-86	81-12	81-50	
82 TANGELO	82-2612	82-1253	82-86	82-12	82-50	
83 TURQUOISE	83-2612	83-1253	83-86	83-12	83-50	
91 PLUM	91-2612	91-1253	91-86	91-12	91-50	
92 FLAMINGO	92-2612	92-1253	92-86	92-12	92-50	
93 LEMONADE	93-2612	93-1253	93-86	93-12	93-50	

SEAMLESS BACKGROUND PAPER COLOR CHART

CC-WIDETONE55



FIND VIDEO TUTORIALS ON THESE PRODUCTS AT [SAVAGEUNIVERSAL.COM](http://SAVAGEUNIVERSAL.COM)

# SEAMLESS

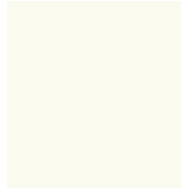
# BACKGROUND PAPER



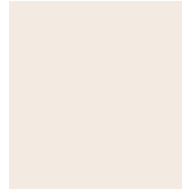
66 PURE WHITE



1 SUPER WHITE



50 WHITE



51 BONE



19 EGG NOG



25 BEIGE



16 CHESTNUT



17 SIENNA



80 COCOA



76 MOCHA



53 PECAN



79 ALMOND



81 RUSTIC



6 CRIMSON



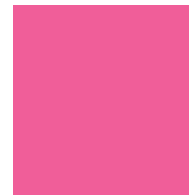
67 RUBY



8 PRIMARY RED



92 FLAMINGO



37 TULIP



4 SAND



71 DEEP YELLOW



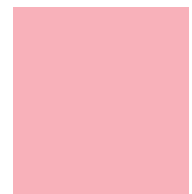
43 MARMALADE



24 ORANGE



82 TANGELO



3 CORAL



38 CANARY



93 LEMONADE



23 SEA GREEN



34 OLIVE GREEN



40 MINT GREEN



18 EVERGREEN

SEAMLESS BACKGROUND PAPER ACCESSORIES AND STORAGE SOLUTIONS ON PAGE 53.



We are committed to producing products that are eco-friendly and safe for the environment. Our paper products utilize on average 75% recycled fiber.

*Although every effort was made to ensure accurate color reproduction, some variation may occur. For more accurate color reproduction, order a Savage Seamless Background Paper Color Swatch Chart from your local dealer or at [SavageUniversal.com](http://SavageUniversal.com).*



## FEATURES:

- Fine-tooth, non-reflective surface
- Cost-effective background solution
- 55 Vibrant colors
- Acid-free and core-wound for longevity
- Paper density: 145 – 180 GSM
- Interior core diameter: 2.125" (5.4cm) (2.63" / 6.7cm for 140" x 105' size)
- 100% Recyclable
- Made in USA



## SAVAGE PAPER IS AVAILABLE IN FIVE SIZES:

- 26" x 36' (66cm x 11m)
- 53" x 36' (1.35m x 11m)
- 86" x 36' (2.18m x 11m)
- 107" x 36' (2.72m x 11m)
- 107" x 150' (2.72m x 45.7m)

Super White, Black, Storm Gray and Tech Green are also available in 140" x 105' (3.56m x 32m).





*Infinity*  
Vinyl  
by Savage

# VINYL BACKGROUNDS

Savage Infinity Vinyl Backgrounds provide an ultra-smooth background and have a unique matte finish which eliminates glare. These strong, durable backdrops work well with high-key lighting, making them an ideal choice for dramatic portrait and commercial photography. Vinyl stands up extremely well to wear, resists scuffs and is easy to clean.

Our Infinity Vinyl Backgrounds come rolled on heavy-duty cardboard cores to prevent wrinkles. They can be used with most standard background support systems and are also available with their own stands.

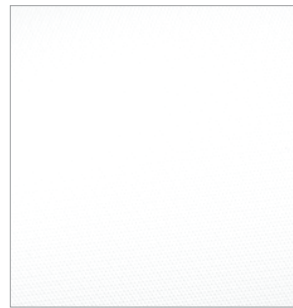
## FEATURES:

- Matte finish - no glare
- Professional quality, durable vinyl
- Easily clean soil marks with a damp sponge
- Ideal for high key photography (white)
- Rolls are on sturdy cores to prevent wrinkles



## TIP:

Working with pets or messy products?  
Vinyl is cleanable and durable!



## PURE WHITE

5' x 7'	(1.52m x 2.13m)	V01-0507
5' x 12'	(1.52m x 3.65m)	V01-0512
8' x 10'	(2.43m x 3.04m)	V01-0810
8' x 20'	(2.43m x 6.09m)	V01-0820
9' x 10'	(2.75m x 3.04m)	V01-0910
9' x 20'	(2.75m x 6.09m)	V01-0920
10' x 10'	(3.04m x 3.04m)	V01-1010
10' x 20'	(3.04m x 6.09m)	V01-1020



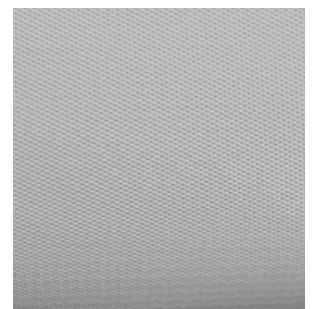
## MATTE BLACK

5' x 7'	(1.52m x 2.13m)	V20-0507
5' x 12'	(1.52m x 3.65m)	V20-0512
8' x 10'	(2.43m x 3.04m)	V20-0810
8' x 20'	(2.43m x 6.09m)	V20-0820
9' x 10'	(2.75m x 3.04m)	V20-0910
9' x 20'	(2.75m x 6.09m)	V20-0920
10' x 10'	(3.04m x 3.04m)	V20-1010
10' x 20'	(3.04m x 6.09m)	V20-1020



## CHROMA GREEN

5' x 7'	(1.52m x 2.13m)	V46-0507
5' x 12'	(1.52m x 3.65m)	V46-0512
8' x 10'	(2.43m x 3.04m)	V46-0810
8' x 20'	(2.43m x 6.09m)	V46-0820
9' x 10'	(2.75m x 3.04m)	V46-0910
9' x 20'	(2.75m x 6.09m)	V46-0920
10' x 10'	(3.04m x 3.04m)	V46-1010
10' x 20'	(3.04m x 6.09m)	V46-1020



## PHOTO GRAY

5' x 7'	(1.52m x 2.13m)	V70-0507
5' x 12'	(1.52m x 3.65m)	V70-0512
8' x 10'	(2.43m x 3.04m)	V70-0810
8' x 20'	(2.43m x 6.09m)	V70-0820
9' x 10'	(2.75m x 3.04m)	V70-0910
9' x 20'	(2.75m x 6.09m)	V70-0920
10' x 10'	(3.04m x 3.04m)	V70-1010
10' x 20'	(3.04m x 6.09m)	V70-1020

## VINYL KITS

### KITS INCLUDE:

PORT-A-STAND AND 5' x 12' VINYL

WHITE VINYL KIT	62037-0512
BLACK VINYL KIT	62037-2012
GREEN VINYL KIT	62037-4612
GRAY VINYL KIT	62037-7012



RECOMMENDED ACCESSORY:  
ALUMINUM CORE (PG. 52)



# Timeless Textures

## CANVAS BACKGROUNDS

Durable and thick canvas is hand-painted in various deep, rich hues for a totally timeless, artfully textured photo background that is ideal for creating elegant and fine-art portraiture.

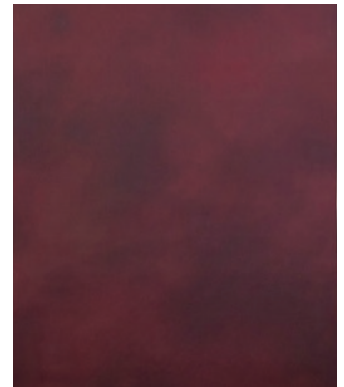
The hand-painting process offers a one-of-a-kind design from piece to piece where photographers can create a high quality, custom styled set at a very affordable price.

### FEATURES:

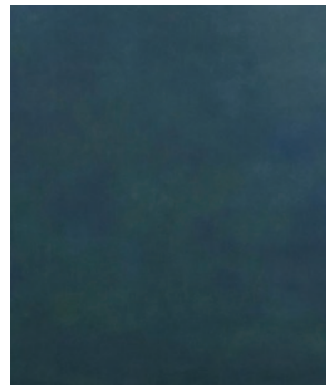
- Sized to 5'x7' and 8'x12' (1.52m x 2.13m and 2.44m x 3.66m)
- Heavy cotton canvas
- Mounted to a heavy-duty aluminum core for easy hanging from a crossbar support system
- Aluminum core inside diameter: 1-7/8" (4.8cm)
- Velcro straps for secure storage/transportation



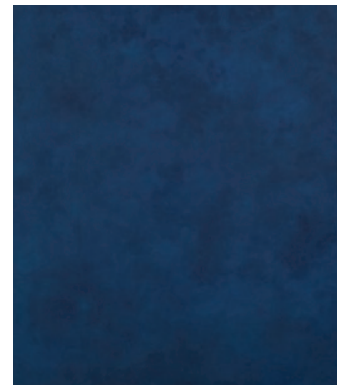
**MARSALA**  
5' x 7' (1.52m x 2.13m) CP500-0507  
8' x 12' (2.44m x 3.66m) CP500-0812



**SCARLET**  
5' x 7' (1.52m x 2.13m) CP502-0507  
8' x 12' (2.44m x 3.66m) CP502-0812



**ALPINE**  
5' x 7' (1.52m x 2.13m) CP504-0507  
8' x 12' (2.44m x 3.66m) CP504-0812



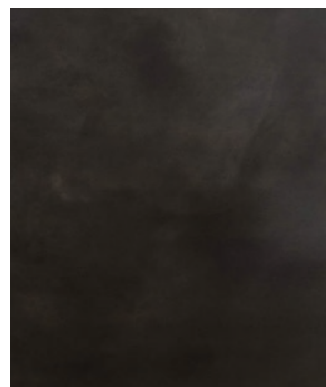
**MIDNIGHT**  
5' x 7' (1.52m x 2.13m) CP506-0507  
8' x 12' (2.44m x 3.66m) CP506-0812



**ASH**  
5' x 7' (1.52m x 2.13m) CP508-0507  
8' x 12' (2.44m x 3.66m) CP508-0812



**DESERT**  
5' x 7' (1.52m x 2.13m) CP510-0507  
8' x 12' (2.44m x 3.66m) CP510-0812



**ECLIPSE**  
5' x 7' (1.52m x 2.13m) CP512-0507  
8' x 12' (2.44m x 3.66m) CP512-0812



ALUMINUM CORE  
PREVENTS SAGGING

# COLLAPSIBLE BACKGROUNDS

Portable, compact, and simple to set up and take down, Savage Collapsible Backgrounds are an ideal choice for photographers looking for a versatile backdrop that easily makes the transition from studio to location.

Our collapsible backgrounds spring open, attach to stands with a support clip, and many can be used horizontally or vertically. They collapse to 1/3 their original size for quick and easy transport in a zippered carry bag.

Also available as a collapsible background kit, including an 8' (2.4m) background stand and support clip.

## FEATURES:

- Reversible - two backgrounds in one
- Easy setup & take down
- Velcro loops allow for vertical or horizontal use
- 100% Cotton
- Carry bag included
- Kit option includes 8' (2.4m) aluminum stand & support clip
- 5' x 6' Collapses to just 26" (66cm)
- 5' x 7' Collapses to just 28" (71cm)
- 6' x 7' Collapses to just 32" (81cm)

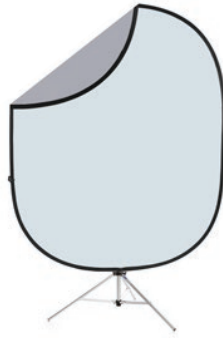


## TIP:

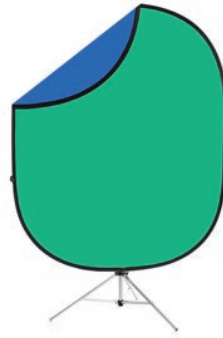
*Shoot portraits with a lower aperture to give the mottled backgrounds a soft, blended look.*



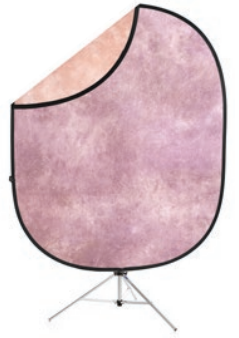
**BLACK / WHITE**  
 5' x 6' KIT WITH STAND CB112-KIT  
 5' x 6' (1.52m x 1.83m) CB112  
 6' x 7' KIT WITH STAND CB112-67-KIT  
 6' x 7' (1.83m x 2.13m) CB112-67



**DARK / LIGHT GRAY**  
 5' x 6' KIT WITH STAND CB114-KIT  
 5' x 6' (1.52m x 1.83m) CB114  
 6' x 7' KIT WITH STAND CB114-67-KIT  
 6' x 7' (1.83m x 2.13m) CB114-67



**CHROMA GREEN / BLUE**  
 5' x 6' KIT WITH STAND CB116-KIT  
 5' x 6' (1.52m x 1.83m) CB116  
 6' x 7' KIT WITH STAND CB116-67-KIT  
 6' x 7' (1.83m x 2.13m) CB116-67



**ROYAL TONE**  
 5' x 6' KIT WITH STAND CB100-KIT  
 5' x 6' (1.52m x 1.83m) CB100



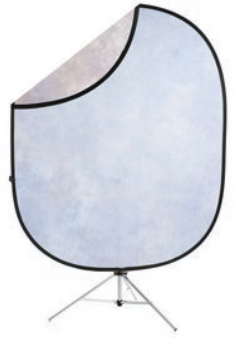
**LAKESIDE**  
 5' x 6' KIT WITH STAND CB102-KIT  
 5' x 6' (1.52m x 1.83m) CB102



**MONSOON**  
 5' x 6' KIT WITH STAND CB104-KIT  
 5' x 6' (1.52m x 1.83m) CB104



**INDIGO NIGHTS**  
 5' x 6' KIT WITH STAND CB106-KIT  
 5' x 6' (1.52m x 1.83m) CB106



**SPRING ESSENCE**  
 5' x 6' KIT WITH STAND CB108-KIT  
 5' x 6' (1.52m x 1.83m) CB108



**EARTH TONE**  
 5' x 6' KIT WITH STAND CB110-KIT  
 5' x 6' (1.52m x 1.83m) CB110



**WHITE BRICK / DARK GRAY**  
 5' x 7' KIT WITH STAND CB180-KIT  
 5' x 7' (1.52m x 2.13m) CB180



**DARK PLANKS / LIGHT GRAY**  
 5' x 7' KIT WITH STAND CB182-KIT  
 5' x 7' (1.52m x 2.13m) CB182



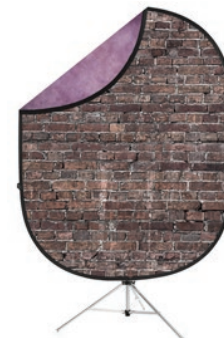
**WEATHERED BRICK / BLACK**  
 5' x 7' KIT WITH STAND CB184-KIT  
 5' x 7' (1.52m x 2.13m) CB184



**RUSTIC PLANKS / RED**  
 5' x 7' KIT WITH STAND CB188-KIT  
 5' x 7' (1.52m x 2.13m) CB188



**INDUSTRIAL GRUNGE / BROWN**  
 5' x 7' KIT WITH STAND CB190-KIT  
 5' x 7' (1.52m x 2.13m) CB190



**GRUNGE BRICK / PURPLE**  
 5' x 7' KIT WITH STAND CB192-KIT  
 5' x 7' (1.52m x 2.13m) CB192



**GRANITE**  
 5' x 6' KIT WITH STAND CB109-KIT  
 5' x 6' (1.52m x 1.83m) CB109



FIND VIDEO TUTORIALS ON THESE PRODUCTS AT [SAVAGEUNIVERSAL.COM](http://SAVAGEUNIVERSAL.COM)





# BACKDROP TRAVEL KITS

Photographers capturing high-volume portraits at events or on-location need a lightweight, portable background system that will deliver a flawless look in any corner. Savage's Backdrop Travel Kits are just the solution! A one-piece stand folds out quickly with just a few adjustments and its star-shaped design pulls the wrinkle-resistant polyester backdrop taut for a smooth finish.

## BACKDROP:

- 100% Plush polyester material provides opaque background
- Non-reflective, glare-free
- Sewn edges
- Includes 3" rod pocket along top edge to hang on any stand
- Includes metal grommets along top and bottom for hanging from the Savage Backdrop Travel Kit stand
- 5' x 7' (1.52m x 2.13m) size is great for headshots or 3/4 body shots
- 5' x 12' (1.52m x 3.66m) size extends onto the floor for full body portraits

## STAND FEATURES:

- Aluminum construction
- One-piece design
- Extends to 7' tall (2.13m)
- Includes sand bag hanging hook for extra support (sand bag not included)
- 54" Footprint (1.37m)
- Star-shaped arm design pulls backdrop taut to eliminate wrinkles
- Includes carry bag



**5' X 7' WHITE BACKDROP TRAVEL KIT**  
5' x 7' (1.52m x 2.13m) KIT WITH STAND BT0157-KIT  
5' x 7' (1.52m x 2.13m) BACKDROP ONLY BT0157



**5' X 12' WHITE BACKDROP TRAVEL KIT**  
5' x 12' (1.52m x 2.13m) KIT WITH STAND BT01512-KIT  
5' x 12' (1.52m x 3.66m) BACKDROP ONLY BT01512



**5' X 7' BLACK BACKDROP TRAVEL KIT**  
5' x 7' (1.52m x 2.13m) KIT WITH STAND BT2057-KIT  
5' x 7' (1.52m x 2.13m) BACKDROP ONLY BT2057



**5' X 12' BLACK BACKDROP TRAVEL KIT**  
5' x 12' (1.52m x 2.13m) KIT WITH STAND BT20512-KIT  
5' x 12' (1.52m x 3.66m) BACKDROP ONLY BT20512



**5' X 7' GREEN BACKDROP TRAVEL KIT**  
5' x 7' (1.52m x 2.13m) KIT WITH STAND BT4657-KIT  
5' x 7' (1.52m x 2.13m) BACKDROP ONLY BT4657



**5' X 12' GREEN BACKDROP TRAVEL KIT**  
5' x 12' (1.52m x 2.13m) KIT WITH STAND BT46512-KIT  
5' x 12' (1.52m x 3.66m) BACKDROP ONLY BT46512



**5' X 7' GRAY BACKDROP TRAVEL KIT**  
5' x 7' (1.52m x 2.13m) KIT WITH STAND BT7057-KIT  
5' x 7' (1.52m x 2.13m) BACKDROP ONLY BT7057



**5' X 12' GRAY BACKDROP TRAVEL KIT**  
5' x 12' (1.52m x 2.13m) KIT WITH STAND BT70512-KIT  
5' x 12' (1.52m x 3.66m) BACKDROP ONLY BT70512



UNFOLDS & ASSEMBLES QUICKLY



EASILY HANG BACKDROP

# FABRIC BACKGROUNDS



Available in a wide range of colors, cloth materials and sizes, our fabric backgrounds are handy for traveling photographers who require lightweight gear they can toss in compact carry bags and go. Many of our fabric backdrops are wrinkle-resistant, making set up and prep time for a photo shoot easier and quicker.

**#SHOOTWITHSAVAGE**

# FABRIC BACKGROUNDS

## SOLID MUSLIN BACKGROUNDS

Savage Solid Muslin Backgrounds are perfect for dramatic studio portraits and groups. Made with high-quality cotton to ensure that you get the most professional and durable background.



### HEAVY WEIGHT

#### PRO WHITE MUSLIN

10' x 10' (3.04m x 3.04m) CL01-1010  
10' x 20' (3.04m x 6.09m) CL01-1020

#### PRO GRAY MUSLIN

10' x 10' (3.04m x 3.04m) CL12-1010  
10' x 20' (3.04m x 6.09m) CL12-1020

#### PRO BLACK MUSLIN

10' x 10' (3.04m x 3.04m) CL20-1010  
10' x 20' (3.04m x 6.09m) CL20-1020

#### PRO CHROMA GREEN MUSLIN

10' x 10' (3.04m x 3.04m) CL46-1010  
10' x 20' (3.04m x 6.09m) CL46-1020

### STANDARD WEIGHT

#### SOLID WHITE MUSLIN

10' x 12' (3.04m x 3.65m) SD0112  
10' x 24' (3.04m x 7.31m) SD0124

#### SOLID GRAY MUSLIN

10' x 12' (3.04m x 3.65m) SD1212  
10' x 24' (3.04m x 7.31m) SD1224

#### SOLID BLACK MUSLIN

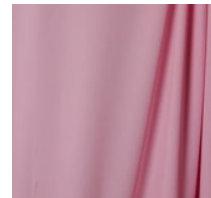
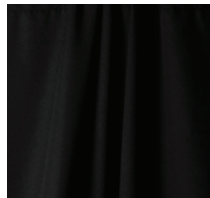
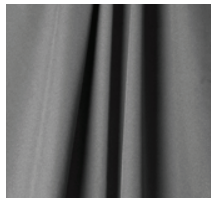
10' x 12' (3.04m x 3.65m) SD2012  
10' x 24' (3.04m x 7.31m) SD2024

#### SOLID CHROMA GREEN MUSLIN

10' x 12' (3.04m x 3.65m) SD4612  
10' x 24' (3.04m x 7.31m) SD4624

## WRINKLE-RESISTANT POLYESTER BACKGROUNDS

Ideal for students, part-time photographers, or anyone needing a durable, easy-to-use background setup that's budget friendly too. Savage 5' x 9' Polyester Wrinkle-Resistant Backgrounds are offered in a variety of vivid and eye-catching colors, and have sewn-in rod pockets for quick and easy hanging.



**WHITE**  
5' x 9' (1.52m x 2.74m)  
01-59

**GRAY**  
5' x 9' (1.52m x 2.74m)  
12-59

**BLACK**  
5' x 9' (1.52m x 2.74m)  
20-59

**GREEN**  
5' x 9' (1.52m x 2.74m)  
46-59

**PASSION PINK**  
5' x 9' (1.52m x 2.74m)  
33-59

**POWDER BLUE**  
5' x 9' (1.52m x 2.74m)  
36-59

# FABRIC BACKGROUND KITS

## SOLID MUSLIN BACKGROUND KITS

Savage Standard Weight Solid Muslin Background Kits include a variety of classic background color and size options and the Savage Port-a-Stand (pg. 54) for added versatility and mobility. This three piece stand is ideal for supporting up to any 10' (3.04m) background on location.



**WHITE KIT**  
10' x 12' (3.04m x 3.65m) 01PAS-12  
10' x 24' (3.04m x 7.31m) 01PAS-24

**GRAY KIT**  
10' x 12' (3.04m x 3.65m) 12PAS-12  
10' x 24' (3.04m x 7.31m) 12PAS-24

**BLACK / WHITE KIT**  
10' x 12' (3.04m x 3.65m) 0120PAS-12  
10' x 24' (3.04m x 7.31m) 0120PAS-24

**BLACK / WHITE / GREEN KIT**  
10' x 12' (3.04m x 3.65m) 012046PAS-12  
10' x 24' (3.04m x 7.31m) 012046PAS-24

**BLACK KIT**  
10' x 12' (3.04m x 3.65m) 20PAS-12  
10' x 24' (3.04m x 7.31m) 20PAS-24

**GREEN KIT**  
10' x 12' (3.04m x 3.65m) 46PAS-12  
10' x 24' (3.04m x 7.31m) 46PAS-24

**BLACK / WHITE / GRAY KIT**  
10' x 12' (3.04m x 3.65m) 011220PAS-12  
10' x 24' (3.04m x 7.31m) 011220PAS-24

## WRINKLE-RESISTANT SOLID ECONOMY BACKGROUND KITS

These Economy Background Kits feature 1, 2 or 3 wrinkle-resistant, polyester backgrounds sized to 5' x 9' (1.52m x 2.74m), and a portable, Economy Background stand with carry bag (pg. 54) for easy set up. Stand features quality spring clamps for simple raising & lowering of the backdrop crossbar.



**WHITE KIT**  
5' x 9' (1.52m x 2.74m)  
59-9901

**GRAY KIT**  
5' x 9' (1.52m x 2.74m)  
59-9912

**BLACK KIT**  
5' x 9' (1.52m x 2.74m)  
59-9920

**GREEN KIT**  
5' x 9' (1.52m x 2.74m)  
59-9946

**WHITE / BLK KIT**  
(2) 5' x 9' (1.52m x 2.74m)  
59-990120

**BLK / WHT / GRY KIT**  
(3) 5' x 9' (1.52m x 2.74m)  
59-99011220

**BLK / WHT / GRN KIT**  
(3) 5' x 9' (1.52m x 2.74m)  
59-99012046

# MUSLIN BACKGROUNDS



Durable and versatile, Savage Muslin Backgrounds are a must-have component of a complete studio setup. Made from high-quality, non-reflective cotton, they create a professional look with minimal effort. Our wide variety of muslins includes solid colors, special patterns like airbrushing and hand-painting, even mottled designs reminiscent of the sky. They create a unique ambiance in any studio or location, perfect for portraits, events and video production. Savage Muslins come equipped with a 3" (7.5cm) rod pocket and are carefully sewn on all sides for ultimate durability and superior visual appeal. Seamless construction eliminates unsightly background lines.

## HAND PAINTED MUSLIN BACKGROUNDS

Infinity Hand-Painted Muslin Backgrounds are painted with a multi-layered process to provide a unique, rich look with Old World style. Kit includes Port-a-Stand (pg. 54).

- Heavy-duty 100% cotton • Seamless, made from one piece of material • 3" Rod pocket for quick hanging
- Carry bag included • Glare-free, matte finish



MILANO HAND PAINTED MUSLIN



**OLYMPIA**  
10' x 10' (3.04m x 3.04m) 406004-1010  
10' x 20' (3.04m x 6.09m) 406004-1020  
KIT 62037-0420



**PETRA**  
10' x 10' (3.04m x 3.04m) 406010-1010  
10' x 20' (3.04m x 6.09m) 406010-1020  
KIT 62037-1020



**VERONA**  
10' x 10' (3.04m x 3.04m) 406018-1010  
10' x 20' (3.04m x 6.09m) 406018-1020  
KIT 62037-1820



**BOGATA**  
10' x 10' (3.04m x 3.04m) 406024-1010  
10' x 20' (3.04m x 6.09m) 406024-1020  
KIT 62037-2420



**VENUS**  
10' x 10' (3.04m x 3.04m) 406026-1010  
10' x 20' (3.04m x 6.09m) 406026-1020  
KIT 62037-2620



**MILANO**  
10' x 10' (3.04m x 3.04m) 406030-1010  
10' x 20' (3.04m x 6.09m) 406030-1020  
KIT 62037-3020

## WASHED MUSLIN BACKGROUNDS

Accent Washed Muslin Backgrounds are dyed and washed for a subtle blended appearance.

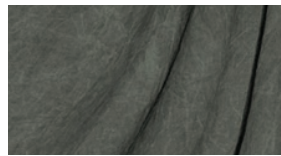
- Heavy-duty 100% cotton • Seamless, made from one piece of material • 3" Rod pocket for quick hanging
- Carry bag included • Glare-free, matte finish



DARK GRAY WASHED MUSLIN



**SKY BLUE**  
10' x 12' (3.04m x 3.65m) WD5012  
10' x 24' (3.04m x 7.31m) WD5024



**LIGHT GRAY**  
10' x 12' (3.04m x 3.65m) WD5112  
10' x 24' (3.04m x 7.31m) WD5124



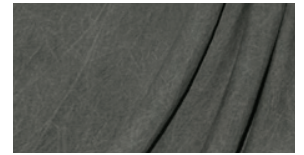
**FOREST GREEN**  
10' x 12' (3.04m x 3.65m) WD5212  
10' x 24' (3.04m x 7.31m) WD5224



**BROWN**  
10' x 12' (3.04m x 3.65m) WD5312  
10' x 24' (3.04m x 7.31m) WD5324



**CRANBERRY**  
10' x 12' (3.04m x 3.65m) WD5412  
10' x 24' (3.04m x 7.31m) WD5424



**DARK GRAY**  
10' x 12' (3.04m x 3.65m) WD5512  
10' x 24' (3.04m x 7.31m) WD5524

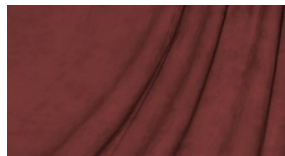
## CRUSHED MUSLIN BACKGROUNDS

Accent Crushed Muslin Backgrounds are dyed and crushed to create a distinct mottled appearance.

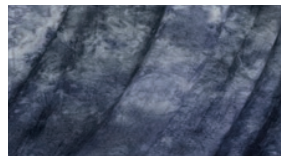
- Heavy-duty 100% cotton • Seamless, made from one piece of material • 3" Rod pocket for quick hanging
- Carry bag included • Glare-free, matte finish



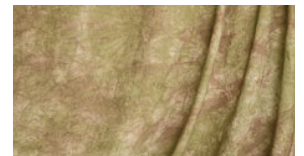
MOCHA BISQUE CRUSHED MUSLIN



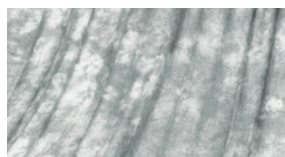
**SEDONA RED**  
10' x 12' (3.04m x 3.65m) CM0112  
10' x 24' (3.04m x 7.31m) CM0124



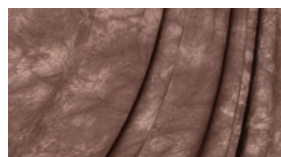
**BLUE WINTER**  
10' x 12' (3.04m x 3.65m) CM0212  
10' x 24' (3.04m x 7.31m) CM0224



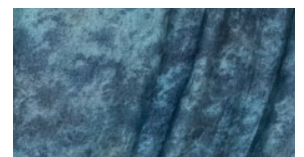
**MOCHA BISQUE**  
10' x 12' (3.04m x 3.65m) CM0312  
10' x 24' (3.04m x 7.31m) CM0324



**GRAY SKIES**  
10' x 12' (3.04m x 3.65m) CM0412  
10' x 24' (3.04m x 7.31m) CM0424



**AUTUMN BROWN**  
10' x 12' (3.04m x 3.65m) CM0512  
10' x 24' (3.04m x 7.31m) CM0524



**APEX BLUE**  
10' x 12' (3.04m x 3.65m) CM0612  
10' x 24' (3.04m x 7.31m) CM0624

# PRINTED VINYL BACKGROUNDS

Savage Printed Vinyl Backgrounds are great for creative photographers who enjoy experimenting with new background styles and textures for trendy senior portrait sessions, fashion photography and other projects. Available in 115 designs, these durable, glare-free backgrounds are sized to 5' x 7' (1.52m x 2.13m) and corewound for longevity.

## FEATURES:

- Sized to 5' x 7' (1.52m x 2.13m)
- Matte, glare-free surface
- Durable and long-lasting vinyl material
- Corewound on a thick cardboard core for easy hanging and storage
- 500 g/sm Thickness
- Easy to clean; just wash with a damp sponge and mild household cleaner



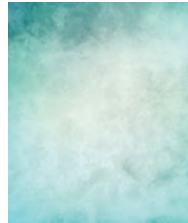
PLASTERED RED BRICK  
P-VL710



WEATHERED BRICK WALL  
P-VL712



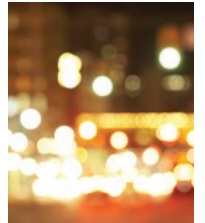
OMBRE PAINTED WOOD  
P-VL724



BLUE WATERCOLOR  
P-VL728



TEXTURED BROWN  
P-VL730



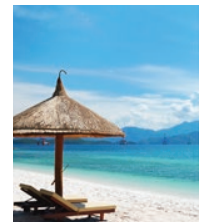
BLURRED STREET LIGHTS  
P-VL758



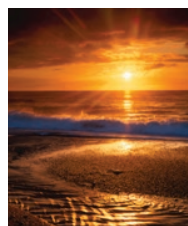
SNOW-COVERED TREES  
P-VL776



AMERICAN FLAG  
P-VL802



TROPICAL BEACH  
P-VL848



BEACH SUNSET  
P-VL836



RUSTIC FARMLAND  
P-VL850



RUSTED METAL  
P-VL868



BLUE STONE WALL  
P-VL872



CRACKED STONE WALL  
P-VL880



BLUE TUSCAN DOOR  
P-VL906



AGED RED DOOR  
P-VL918



STADIUM LIGHTS  
P-VL924



STREET CORNER ART  
P-VL938



TEXTURED BROWN PRINTED VINYL

VIEW ALL 100+ PRINTED VINYL DESIGNS  
AT SAVAGEUNIVERSAL.COM

# PRINTED BACKGROUND PAPER

Savage Printed Background Paper brings versatility and energy to portrait sessions, special events and photo booths! Printed with high definition printers, trendy designs and patterns display continuously along a 53" x 18' (1.35m x 5.5m) roll that is corewound for easy hanging. Offered in a variety of styles from wood and brick to floral and polka dot patterns, these unique and realistic backgrounds photograph beautifully and enhance your creative flair!

## FEATURES:

- Fine-tooth, non-reflective surface
- Economical
- Vibrant patterns & realistic textures
- Paper density: 163 GSM
- Acid-free and core-wound for longevity
- Interior core diameter: 2.125" (5.4cm)
- Convenient 53" x 18' size (1.35m x 5.5m)
- Patterns are continuous along entire roll
- 100% Recyclable



WORN PLANKS PRINTED BACKGROUND PAPER



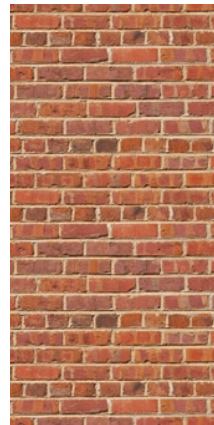
**WORN PLANKS**  
P-PA5318WRN



**GRAY PINE**  
P-PA5318GRP



**WHITEWASH**  
P-PA5318WHW



**RED BRICK**  
P-PA5318RBR



**WHITE BRICK**  
P-PA5318WTB



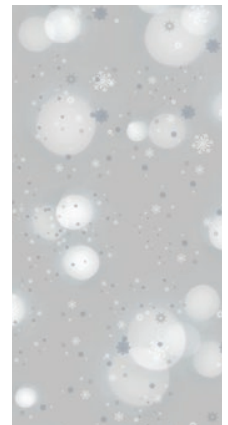
**WEATHERED BRICK**  
P-PA5318WBR



**GRUNGE BRICK**  
P-PA5318GBR



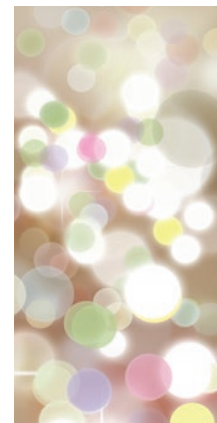
**IVORY GLOW**  
P-PA5318IVG



**WINTER FROST**  
P-PA5318WFR



**LOVE BURST**  
P-PA5318LOB



**CELEBRATION LIGHTS**  
P-PA5318CBL



**PATTERNS ARE  
CONTINUOUS  
ALONG ENTIRE ROLL**

# TRANSLUM™

Add the soft glow of frosted glass to images with Savage Translum™. Made from smooth, texture-free plastic, this versatile material can be used as a diffusion panel, light table, prop setup or portrait background. Subjects on the other side are seen as silhouette shapes. Try backlighting for an easy high-key setup.

## FEATURES:

- Sturdy, durable plastic material
- Specialized effect of frosted glass
- Easily cut with scissors for added creativity
- Ideal for silhouettes & backlighting
- Inside core diameter: 2.125" (5.4cm)
- Easily wipes clean after food & drink shoots

### HEAVY WEIGHT TRANSLUM

54" x 18' ROLL (1.37m x 5.49m) F-STOP / LIGHT LOSS: 2  
55418

### MEDIUM WEIGHT TRANSLUM

60" x 18' ROLL (1.52m x 5.49m) F-STOP / LIGHT LOSS: 1.5  
46018

### LIGHT WEIGHT TRANSLUM

60" x 18' ROLL (1.52m x 5.49m) F-STOP / LIGHT LOSS: 3/4  
36018

### SHEET VARIETY PACK

12" x 12" SHEETS (30.5cm x 30.5cm) VARIETY - 2 OF EACH WEIGHT  
TL1212-PK



HIGH-KEY BACKGROUND



DIFFUSION MATERIAL



TABLETOP BACKGROUND



SILHOUETTES





# GREEN SCREEN

Digital and chroma key or green screen technology offers photographers virtually unlimited photographic innovation. Our full line of digital and chroma key products incorporates user-friendly software and backgrounds to fit any space or project. They'll take you wherever your imagination leads you...and possibly beyond.

**PURCHASE ANY GREEN SCREEN SOFTWARE OR KIT & GET UNLIMITED ACCESS TO 3,500 IMAGE EXCLUSIVE ONLINE GALLERY**



## GREEN SCREEN SOFTWARE

Our Green Screen Software Kit makes green screen magic a snap with our easy-to-use Green Screen Wizard Lite software, and includes access to an online image library of 3,500 high resolution digital backgrounds. This software can be used with any green screen backdrop. A great introduction to chroma key technology.

### INCLUDES:

- Green Screen Wizard Software (PC/Mac)
- Access to image library featuring 3,500 high-resolution background images

**GREEN SCREEN SOFTWARE DBK720**



## GREEN SCREEN PHOTO CREATOR KIT

### KIT INCLUDES:

- Green Screen Wizard Software (PC/Mac)
- 5' x 7' (1.52m x 2.13m) Green Screen Muslin
- Removable hooks for hanging Green Screen
- Access to library featuring 3,500 images

**GSPCK**



## GREEN SCREEN SUIT

Designed for live-action chroma key work, our Green Screen Video Suit features a poly/lycra construction, mesh face for breathability and zippers on the back and wrists.

**MEDIUM SUIT GSMED**  
**LARGE SUIT GSLG**



**HOOD GSHOOD**  
**LARGE SHIRT GSSHIRT**  
**GLOVES GSGLOVES**  
**LARGE PANTS GSPANTS**

## GREEN SCREEN BACKGROUNDS



**SEAMLESS PAPER**  
#46 TECH GREEN (PG 9)



**VINYL GREEN SCREEN**  
#V46 CHROMA GREEN (PG 11)



**MUSLIN & FABRIC**  
CHROMA GREEN (PG 19)



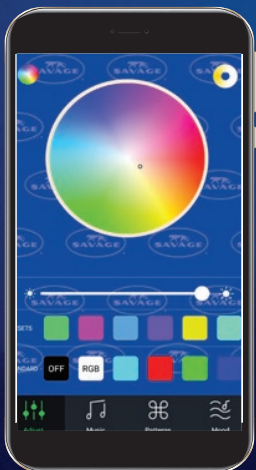
**COLLAPSIBLE**  
#CB116 (PG 15)





# LED LIGHTING

The Savage LED lineup has solutions for almost any shooter! Quick setup and easy to use controls make head shots, videos and creative shoots a breeze. Many of our lights can be remotely controlled, conveniently enabling you to experiment or make adjustments while behind the camera. Bright, high-CRI diodes and flicker-free DC power options mean you'll achieve beautiful results in video, and RGB features add even more fun to the mix!



## *Convenient control from your phone.*

Many of our lights are compatible with our free Light Manager mobile application! Group multiple lights for seamless set control. Experiment with exciting special effects to captivate your audience.

### INCLUDED PRESET FUNCTIONS

- Mood: Light pulses to ambient sounds
- Music: Light pulses to music and audio files
- Patterns: Rainbow, pulse, fade, strobe & flash



*Not all app features are compatible with all Savage RGB lights. Reference user manual for each light to discover compatibility.*

### 12" RGB TABLETOP RING LIGHT



Achieve picture perfect catchlights, colored fill and hair lighting, and even exciting special effects for your videos and vlogs with this compact ring light kit! Ideal for any small workspace or desk, this 12" (30cm) LED ring light is color correctable from 3200K - 5500K and includes 36 RGB colors to select from. Experiment with 25+ light patterns, including syncing with your music files via the free Savage Light Manager mobile app. Attach the reversible mirror and mobile phone holder with flexible arm when streaming tutorials.

**FEATURES:**

- Light measures 12" (30cm) outer diameter / 8.5" (22cm) inner diameter
- 3200K - 5500K
- 36 RGB colors
- CRI: 97 at 5500K / CRI: 92 at 3200K
- 480 Lux at 1 meter at 3200K or 5500K
- Light includes cold shoe mount and two 1/4"-20 female threads
- Expandable phone holder accommodates any size mobile phone
- Fanless design is ideal for video applications
- 110 - 240V

**INCLUDES:**

- (1) 12" (30cm) RGB ring light
- (1) 10" (25cm) to 17" (43cm) Tabletop stand
- (1) 16' (4.87m) Power cord with inline controller
- (1) 6" (15cm) Reversible mirror
- (1) Adjustable mobile phone holder with bendable arm mount
- (1) Carry bag

12" RGB TABLETOP RING LIGHT RGB-RL-TTT

### RING LIGHT BEAUTY VIDEO KIT



The perfect kit for vloggers, photographers and beauticians! Produce seamless tutorials using the included mirror and two mobile phone holders with adjustable arms. This ring light with light stand is bi-color and blendable between 5700K and 2700K, enabling the user to match any available light in a room or warm the subject for creative purposes. Includes a reversible gray/green cloth backdrop with hanging hooks to create a solid, professional background for vlogs.

**FEATURES:**

- 17" (43cm) Outer diameter / 14" inner diameter (36cm)
- 2700K to 5700K
- CRI: 95 at 3200K - 5700K / CRI: 92 at 2700K
- 2050 Lumens
- Front controls for easy selfie access
- Stream from multiple devices
- Expandable phone holders accommodate any size mobile phone
- Auxiliary USB port on back panel for phone charging (5V, 2A)
- Fanless design is ideal for video applications
- 110 - 240V
- Aluminum light stand extends from 21" to 72" (53cm to 1.83m)
- Stand maximum load: 5 lbs. (2.27kg)
- Stand includes 1/4"-20 / 3/8" stud for light head mounting
- Wrinkle-resistant polyester backdrop measures 5' x 7' (1.52m x 2.13m)
- Backdrop includes 4 metal corner grommets

**INCLUDES:**

- (1) 17" (43cm) Cool-running LED ring light
- (1) 6" (15cm) Reversible mirror
- (2) 6" (15cm) Flexible arms
- (2) Mobile phone holders
- (1) 8' (2.44m) AC power cord
- (1) 6' (1.83m) Extending light stand
- (1) 5' x 7' (1.52m x 2.13m) Reversible polyester backdrop (gray/chroma green)
- (2) Adhesive wall hooks
- (1) Carry bag

RING LIGHT BEAUTY VIDEO KIT RLBV-K17

### 17" VLOGGER RING LIGHT



Provides flattering and even light for Youtubers and vloggers with desirable round catchlights in the subject's eyes. Produce seamless tutorials using the included mirror and two mobile phone holders with adjustable arms. Control settings are in the front where you need them! This ring light is bi-color and blendable between 5700K and 2700K, enabling the user to match any available light in a room or warm the subject for creative purposes.

**FEATURES:**

- 17" (43cm) Outer diameter / 14" inner diameter (36cm)
- 2700K to 5700K
- CRI: 95 3200K - 5600K / CRI: 92 at 2700K
- 2050 Lumens
- 10% - 100% Stepless dimmer
- Front controls for easy selfie access
- Stream to multiple devices
- Auxiliary USB port on back panel for cell phone charging (5V, 2A)
- Fanless design is ideal for video applications
- 30 Watts
- 110 - 240V

**INCLUDES:**

- (1) 17" (43cm) Bi-color LED ringlight with three shoe mounts
- (1) 6" (15cm) Mirror
- (2) Flexible arms
- (2) Mobile phone holders
- (1) 8' (2.44m) AC power cord

17" VLOGGER RING LIGHT LED-RL-BI-16



### 18" LUMINOUS PRO BI-COLOR LED RING LIGHT

Use as a smooth, on-axis fill light and enjoy the stunning circular catchlights in your model's eyes. A low-heat, fanless design and flicker-free LEDs are especially ideal for video use. The soft and even light characteristics are preferable for glamour shots and key light applications. Includes 5 cold shoe mounts and a metal ball head for mounting a small action camera or mobile phone (holder not included.) Dual USB ports allow you to charge mobile phones during use. Also compatible with two NP-F750/770/970 batteries (not included) for travel use.

**FEATURES:**

- 18" (46cm) Outer diameter / 14" wide (36cm) inner diameter
- LED Readout for battery level, Kelvin temperature and power level
- Dimmable from 0% to 100% in 10% increments
- CRI: 94 at 3200K and 5500K
- 4500 Lumens
- (2) Auxiliary USB ports on back panel for cell phone charging (5V, 2A)
- (5) Available shoe mounts to allow for multiple accessory attachments
- 60 Watts
- 110 - 240V

**INCLUDES:**

- (1) 18" (46cm) Bi-color LED ring light
- (1) Metal ball head
- (1) 15' (4.57m) AC Power cord
- (1) Padded carry bag

- 18" LUMINOUS PRO BI-COLOR LED RING LIGHT** LED-RL18BI
- 4400MAH - ACCESSORY BATTERY 2 PACK** BNP-F750
- 6600MAH - ACCESSORY BATTERY 2 PACK** BNP-F970
- RING LIGHT ACCESSORY KIT** LED-RLAK



### 17" LED RING LIGHT PLUS

A versatile, bi-color light for photo, video and beauty applications. Soft, even lighting produced by the ring shape creates striking catchlights in a model's eyes, smoothes skin imperfections and enhances the overall look of your model's skin tone. The diffused front makes close-in shots easier on the subject's eyes. A large rear LCD display allows for easy adjustments. Includes remote control.

**FEATURES:**

- 17" (43cm) Outer diameter / 12" (30cm) inner diameter
- 3200K to 5500K
- 5300 Lumens at 4300K, 4300 lumens at 3200K, 3600 lumens at 5500K
- CRI: 95
- 10%-100% Stepless dimmer
- Fanless design is ideal for video applications
- Shoe mount and metal ball head for camera mounting
- 75 Minute run time at full power with included batteries
- Large LCD readout for easy setting adjustments
- 60 Watts
- 110 - 240V

**INCLUDES:**

- (1) 480 Chip bi-color LED ringlight
- (1) Remote control
- (1) Metal ball head
- (1) 9' (2.74m) AC power supply
- (2) NP-F750 batteries and chargers
- (1) Padded carry bag

- 17" LUMINOUS PRO LED RINGLIGHT PLUS** LED-RLPS
- 4400MAH - REPLACEMENT BATTERY 2 PACK** BNP-F750
- 6600MAH - REPLACEMENT BATTERY 2 PACK** BNP-F970



### 17" RAINBOW RGB RING LIGHT

Experiment with 360 distinct color options to give your fill and rim lights that extra pop! Or switch over to daylight mode and adjust the color temperature anywhere from 2700K to 10,000K to match available light in any room. The soft, even light characteristics make the light ideal for glamour shots and key light applications, and the diffused front makes close-in shots easier on any subject's eyes. Easily control the light with the back panel display, or remotely using the Savage Light Manager free smart phone app with 25+ special lighting effects!

**FEATURES:**

- 17" (43cm) Outer diameter / 12" (30cm) inner diameter
- 2700K -10,000K
- 360 RGB colors
- CRI: 90 at 5600K / CRI: 97 at 3200K
- Lumens: 3640 at 5600K and 2670 at 3200K
- RGB Lux at 1 meter: 840 Red, 1215 Green, 490 Blue
- Includes cold shoe mount and ball head for camera mounting
- LED back panel display controls color temperature, battery life, power level & RGB colors
- Up to 90 minute runtime with included batteries in daylight mode / 150 minutes in RGB mode
- 60 Watts
- 110 - 240V

**INCLUDES:**

- (1) 244 Chip bi-color LED ring light
- (1) Metal ball head
- (1) 9' (2.74m) AC power cord
- (2) NP-F750 Batteries and chargers
- (1) Padded carry bag

- 17" RAINBOW RGB RING LIGHT** RGB-RL
- 4400MAH - REPLACEMENT BATTERY 2 PACK** BNP-F750
- 6600MAH - REPLACEMENT BATTERY 2 PACK** BNP-F970

# STAR LIGHT



COMPATIBLE WITH THE SAVAGE LIGHT MANAGER APP  
FOR BRIGHTNESS AND COLOR TEMPERATURE SELECTION.  
*(Additional app features not available.)*

## STAR LIGHT

Add a twinkle to your eye and feel like a star! The Savage Star Light creates intriguing catchlights in your subject's eyes for a special look that sets your photos and videos apart. Enjoy soft and even lighting similar to a ring light, with a more unique catchlight. Steplessly adjust to any color temperature between 5500K and 3200K to match ambient light in any room via the free Savage Light Manager mobile app. Experiment with different angles and the distance of your subject from the light for varying twinkle effects, or adjust the positioning of the LED panels for different catchlight shapes.

### FEATURES:

- Adjustable from 3200K to 5500K
- CRI 97 at 5500K
- CRI 95 at 3200K
- 1900 Lux at 1 meter at 5500K
- 1700 Lux at 1 meter at 3200K
- Includes 160 (5500K) daylight and 160 (3200K) tungsten chips
- Uses 60 watts of power
- Voltage: 110 – 240V
- 70 Min runtime at full power using included NP-F770 batteries
- Control color temperature and brightness via the free Savage Light Manager mobile app

### INCLUDES:

- Collapsible star shaped LED panel light
- Tilttable light stand adapter
- Ball head
- AC power cord
- (2) NP-F770 batteries
- (2) Battery chargers
- Molded carry case

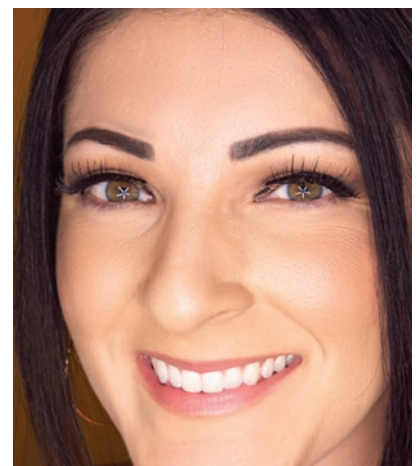
### STAR LIGHT    LED-STL



UNIQUE STAR SHAPED LIGHT PANEL WITH CARRY CASE



COMPACT AND LIGHTWEIGHT



CREATE UNIQUE CATCH LIGHTS

# EDGE LIT

## LED PANEL LIGHTING

The Savage Edge Lit Pro series combines sleek, ultra-thin panel designs that enhance the look of any studio space, with the desirable benefits of no heat output and no fan noise, making the lights perfect fits for both photo and video applications. Enjoy the beautifully diffused light emitted through the front diffuser cover from the hundreds of LED chips that line the entire panel edges, providing a soft and stunning portrait style for any subject.

### FEATURES:

- 12" x 9" (30cm x 23cm) Ultra-thin LED panel
- 3200K - 5500K
- CRI: 95
- 1677 Lumens at 3200K, 1784 lumens at 5500K
- Flicker-free and fanless
- LCD displays power, temperature & channels
- Multi-channel remote controls lights or light groups
- Includes rotating light stand adapter
- Includes padded carry bag
- Includes AC power supply & 2 Sony style NP-F750 batteries with chargers
- DC run time: 75 minutes at full power
- DMX in/out using RJ11 (phone cord) connectors
- 60 Watts
- 110 - 240V



ULTRA-THIN LED PANEL DESIGN WITH INTUITIVE CONTROL PANEL

### EDGE LIT PRO LED LIGHT

LED-ELLG

4400MAH - REPLACEMENT BATTERY 2 PACK BNP-F750

6600MAH - REPLACEMENT BATTERY 2 PACK BNP-F970

## LUMINOUS PRO LED VIDEO LIGHT

A versatile LED light source for photographers and videographers on-the-go. Multiple LED Video Lights are connectable with the optional Multi-Light Connector 2 pack. The connectors allow multiple lights to connect and pivot up to 15 degrees to create a wraparound light effect.

### FEATURES:

- 5" x 7" (13cm x 18cm) Panel
- 204 High efficiency chip on board LEDs
- 3200K - 5400K
- CRI: 91
- 1530 Lumens at 3200K or 5400K
- 900 Lumens at 4200K
- Includes 4.5' (1.37m) AC power supply & 1 Sony style NP-F750 battery with charger
- 3 Hour run time at full power with included battery
- Separate stepless dimmer and color temperature adjustments
- Includes standard shoe and 1/4"-20 female thread
- 14 Watts
- 100 - 240V

### LUMINOUS PRO LED VIDEO LIGHT

LED204

MULTI LIGHT CONNECTOR 2 PK LED204-C2

4400MAH - REPLACEMENT BATTERY 2 PACK BNP-F750

6600MAH - REPLACEMENT BATTERY 2 PACK BNP-F970

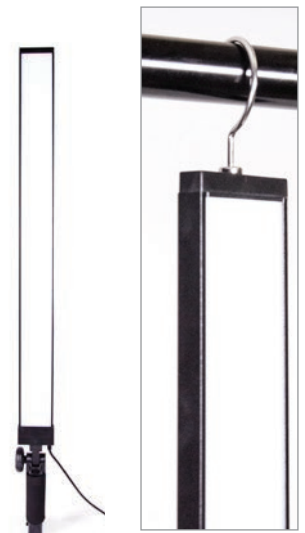


## LED LIGHT WAND

Great for fill lighting, macro photography and product photography. This multi-application tool can hang almost anywhere with the convenient accessory hook, or secured to a light stand or boom. A padded handle makes it comfortable for handheld use as well. Use the stepless dimming control for optimal lighting.

### FEATURES:

- 2" x 24" (5cm x 61cm) Panel
- 5600K Daylight balanced light
- CRI: 90
- Stepless dimming control
- Attaches to light stand or boom
- Tilttable, padded handle for handheld use
- Hang anywhere with included hook
- Includes 9' (2.74m) AC power supply
- 30 Watts
- 110 - 240V





# RGB LIGHTING

*Convenient control from your phone.*

Many of our RGB lights are compatible with our free Light Manager mobile application!

Group multiple lights for seamless set control. Experiment with exciting special effects to captivate your audience.

#### INCLUDED PRESET FUNCTIONS

Mood: Light pulses to ambient sounds

Music: Light pulses to music and audio files

Patterns: Rainbow, pulse, fade, strobe & flash



## RGB PRO LED PANEL

The Savage RGB Pro LED Panel is a soft light panel that can handle every need! Whether you need to select from 360 separate and distinct colors, color temperature accuracy or even special effects, this panel can handle the job. Our unique 3 chip design allows us to use both CRI 97 amber and white chips (RGB + W + A) so that color accuracy is not degraded as the temperature is adjusted. Light is controllable using the back panel digital readout, our free Savage Light Manager mobile app or via DMX. The panel can be powered with the included AC power cord or via V-mount style battery (not included).

#### FEATURES:

- Diffused soft light front panel measures 11.5" x 10" (29cm x 26cm)
- Color temperature blendable from 3200K to 10,000K
- CRI: 97 at 5500K and 3200K
- 360 selectable colors using RGB mode
- Saturation adjustable for selected color
- Special effects available like strobe, span, pulse, lightning, TV screen and sirens
- Cell phone app controllable
- Includes barn doors
- AC/DC power options (V-mount style DC battery not included)
- DMX controllable
- 120° beam angle

#### RGB-50P SPECS:

- 1621 Lux at 1 meter at 5500K
- 648 Lux at 1 meter at 3200K
- Power supply: 15V, 5A

#### RGB-100P SPECS:

- 1934 Lux at 1 meter at 5500K
- 1546 Lux at 1 meter at 3200K
- Power supply: 15V, 8A

**50W RGB PRO LED PANEL**  
**100W RGB PRO LED PANEL**

RGB-50P  
 RGB-100P





## RGB LIGHT PAINTER PRO LED WAND

The Savage RGB Light Painter Pro LED Wand is an exciting tool for everything from creative light painting to colorful portraits to cool video special effects. The battery operated design allows total freedom of movement. Use hand-held, mounted to a light stand or hung almost anywhere. When dialing in to 200 separate colors, each can also be adjusted for both hue and saturation, giving the user almost unlimited shade and intensity options. Command the RGB Light Painter Pro LED Wand to strobe, span through the color spectrum or even pulse to a music or audio file!

### POCKET RGB VIDEO LIGHT FEATURES:

- 16" (41cm) Long light surface, 24" (61cm) total wand length
- 3200K - 5500K
- 200 RGB colors
- 318 Bi-color LEDs, 40 RGB LEDs
- CRI: 96
- Lux: 6351 (5500K), 6131 (3200K), 5681 (4200K)
- Lumens at 1m: 1041 (RGB Red), 560 (RGB Blue), 1121 (RGB Green)
- Battery run time: 5 hours (RGB mode), 4 hours (Daylight mode)
- Control remotely with free mobile app
- Mobile app can control multiple wands in sync or individually
- Includes bottom 1/4"-20 female thread and hanging hook with 1-1/4" opening
- Includes 8' (2.44m) AC power supply
- Includes 1 Sony style NP-F750 battery with charger
- 100 - 240V

**RGB LIGHT PAINTER PRO LED WAND**      **LW-RGB**  
**4400MAH - REPLACEMENT BATTERY 2 PACK**    **BNP-F750**  
**6600MAH - REPLACEMENT BATTERY 2 PACK**    **BNP-F970**



## POCKET RGB VIDEO LIGHT & SMART PRO MOBILE PHONE HOLDER

The compact Savage Pocket RGB Video Light is ideal for pairing with a camera phone using the Savage Smart Pro Mobile Phone Holder (sold separately.) With size dimensions similar to a large cell phone, you won't take up much space in your camera bag or purse. This pocket size LED light allows for color correction between 3000K and 6500K to warm your subject or match any available light in any room. Switch to RGB mode and dial in an almost unlimited number of colors and hues for creative mood lighting. Also useful for on-the-go hair and fill lighting. Need some quick special effects for a run-and-gun video? No problem! The Savage Pocket RGB Video Light is capable of dozens of exciting special effects including strobes, fades, police car lights, lightning and many more when controlled through our free Light Manager mobile app (available on Apple App Store and Google Play Store.)

### POCKET RGB VIDEO LIGHT FEATURES:

- Compact pocket size: 5" x 3" x 3/4" (13cm x 8cm x 2cm)
- Built in battery
- Run time at full power in RGB mode: 90 mins
- Run time at full power in daylight mode: 90 mins
- Shoe mountable ball head for easy camera mounting
- USB-C charge cord and household plug adapter
- Strobe, fade, pulse and special lighting effects
- Includes free Savage Light Manager App download

### PHONE HOLDER FEATURES:

- All metal design
- Works with all smart phones
- Shoe mount for video light/microphone mounting
- Removable super comfort grip handle
- Light stand mountable via 1/4"-20 or 3/8" male threads
- Threaded clamp for extra tight hold
- Tilt swivel allows quick pivot of smart phone from vertical to horizontal positions as well as leveling

**POCKET RGB VIDEO LIGHT**      **RGB-POC**  
**SMART PRO MOBILE PHONE HOLDER**    **CFS**



## RGB360 COLOR VIDEO LIGHT

The Savage RGB360 Video Light can be used as a very bright onboard video light or switched to its RGB function allowing the user to dial in 360 different colors. No more gels!

### FEATURES:

- 5" x 6" (13cm x 15cm) Panel
- 3200K - 5700K
- 360 Color possibilities eliminate the need for gels
- 2025 Lumens at 5700K (daylight mode)
- CRI: 95 (daylight mode)
- Cycle all colors using auto color mode
- Soft diffused light front panel
- LCD displays battery level, Kelvin & color reference numbers
- Stepless dimmer adjusts from 10% to 100% in both modes
- Includes 1 Sony style NP-F750 battery & charger
- 2-1/2 Hour run time at full power when 5700K bulbs are used
- 4 Hour run time at full power when RGB bulbs are used
- 15 Watts (daylight mode) / 11 Watts RGB mode
- Light angle 120°
- Tilttable shoe mount with 1/4"-20 female thread for mounting to both cameras & light stands

**RGB360 COLOR VIDEO LIGHT**      **RGB-VL**  
**RGB360 COLOR VIDEO LIGHT AC ADAPTER**    **RGB-VL-PS**  
**4400MAH - REPLACEMENT BATTERY 2 PACK**    **BNP-F750**  
**6600MAH - REPLACEMENT BATTERY 2 PACK**    **BNP-F970**





## 700W RGB PORTRAIT KIT

Provides a soft, even light source for portraits and interviews when used with the included 20" easy open softboxes. Experiment with dozens of exciting special effects for video, find your favorite color to add pop to hair lights or get creative with fill light! LEDs ensure a very low heat light source. The kit produces the equivalent of 700W incandescent light while only utilizing 100W of electricity. Change the light settings via the rear control panel or from your smart phone with the free Savage Light Manager mobile app.

### FEATURES:

- 20" (51cm) Wide easy open softboxes require no assembly
- 3200K – 5500K
- 360 Color options
- CRI: 97 at 3200K and 5500K
- TLCI: 98
- 1179 Lux at 1m at 3200K to 5500K with front baffle removed
- 503 Lux at 1m at 3200K to 5500K with front baffle attached
- Kit equivalent to 700 watts of incandescent light using just 100 watts of power total
- Silent fan design is ideal for vloggers and video work
- 100-240V

### KIT INCLUDES:

- (2) Dimmable 168 chip on board RGB lights
- (2) Quick-open softboxes with detachable baffles
- (2) 6' Light stands
- (2) AC power cords
- (1) Padded carry bag

**RGB PORTRAIT KIT**      **LED-SB-UP**

## LED STUDIO LIGHT KIT

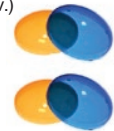
The Savage LED Studio Light Kit features two energy efficient and dimmable tri-band technology LED chip bulbs. Each light produces 5500K daylight balanced light and provide 20,000 hours of lamp life. Bulbs can be separately controlled with included remote up to 50 feet away.

### FEATURES:

- 5500K Daylight balanced light
- Low operating temperature, dimmable bulbs
- 20,000 Hours of lamp life
- Tri-Band technology
- CRI: 90
- 100 – 230V

### 500W KIT INCLUDES:

- (2) 35W dimmable LED lights (250W incandescent equiv.)
- (2) Umbrella sockets & 9' (2.7m) power cords
- (2) 33" (83cm) Translucent umbrellas
- (2) 6' (1.8m) Light stands
- (2) Removable warming/blue domes
- (1) Remote control
- (1) Carry bag



### 700W BI-COLOR KIT INCLUDES:

- (2) 50W Bi-color & blendable LED lights (350W incandescent equiv.)
- (2) Umbrella sockets & 9' (2.7m) power cords
- (2) 33" (83cm) Translucent umbrellas
- (2) 6' (1.8m) Light stands
- (2) Removable blue domes
- (1) Remote control
- (1) Carry bag



**500 WATT LED STUDIO LIGHT KIT**

**LED60K-R**

**700 WATT BI-COLOR, BLENDABLE LED STUDIO LIGHT KIT**

**LED700K-BI**

**35 WATT LED BULB & REMOTE (250W EQUIVALENT)**

**LED30**

**50 WATT LED BI-COLOR BULB & REMOTE (350W EQUIVALENT)**

**50WLED-BI**



**COMING  
SOON!**



**2400W LED LIGHT KIT**

This powerful light kit is ideal for studio photo or video shoots. Each light produces the equivalent of 1200 watts of incandescent light while only using 120 watts of electricity. Controllable through the back panel or remotely using the Savage Light Manager app. Color temperature adjustable from 2700K to 5600K with no change in CRI. A variety of strobos, pulses and even simulated lightning strikes are possible for video effects. Whisper quiet fan technology generates only 5 db of fan noise at 1 meter. Convenient Bowens front mount allows for almost unlimited light modification possibilities. Bright, color accurate and versatile all-in-one light.

**FEATURES:**

- Lux: 17,600 at 1 meter (3200K or 5500K) with included reflector (individual light)
- CRI: 97 at 5600K and 3200K
- Bi-color adjustable from 2700K to 5500K
- Controllable via the free Savage Light Manager mobile app
- Large digital readout on rear panel is easily readable at distance
- Fan noise: 0 db up to 25% power, less than 5 db at 1 meter at full power
- 120° Beam angle
- Front Bowens mount
- 120W (individual light)
- 110-240V

**KIT INCLUDES:**

- (2) Dimmable chip on board LED light heads
- (2) 7" Reflectors
- (2) 6' Extending aluminum light stands
- 9' Power cord
- Padded carry bag



**1200W LED LIGHT**

LED120

**2400W LED LIGHT KIT**

LED240K

**PRO GAMER LIVE STREAM ACCESSORY KIT**

Show off your skills to your online video gaming community with this affordable lighting, background and audio accessory kit which helps create a professional recording environment from your home or office space. Slim LED lights provide soft, even lighting. A reversible gray/chroma green backdrop is easily hung behind you to hide a distracting room or to display your video game background. A mic stand with pop filter enhances the sound quality of your commentary. Record from a DSLR or phone with the tabletop stand and phone holder.

**INCLUDES:**

- (2) 8" x 5" x 1" (20cm x 13cm x 3cm) LED light panels
- (2) 8' (2.44m) AC power cords
- (3) 28" (71cm) Light stands with weighted lamp holder bases
- (2) Tabletop mount clamps
- (3) Metal ball heads
- (1) 5' x 7' (1.52m x 2.13m) Reversible wrinkle-resistant polyester backdrop (chroma green/gray) with metal grommets
- (2) Adhesive wall hooks
- (1) Microphone stand with pop filter
- (1) Smart phone holder
- (1) Canvas carry bag



**PRO GAMER LIVE STREAM ACCESSORY KIT**

PGLSA-KIT

A person wearing a black cap and a black shirt is seen from the side, operating a large, heavy-duty metal C-stand. The stand is positioned in front of a white vehicle, possibly a truck or trailer, at night. The scene is illuminated by bright, cool-toned lights, creating a professional and industrial atmosphere. The person's hands are on the controls of the stand, which is mounted on a large wheel. The background is dark, with some blurred lights and structures, suggesting a film set or a construction site.

# SAVAGE GRIP

Pro grips need heavy-duty stands they can drag through the mud and put to the test. With patented features on Savage C-Stands that allow a user to mount multiple lights or modifiers from one stand, or set up closer to a corner or obstacle than ever before, we now offer a full suite of production solutions to make life on set a little bit easier.

**#SAVAGECSTAND**





COMPACT CLAMSHELL  
LIGHTING SETUP



# C - S T A N D S

## BY SAVAGE

A FULL SUITE PRODUCTION GRIP SOLUTION.

**DO MORE WITH LESS IN THE WAY**

PATENT PENDING DOUBLE JUNIOR RECEIVERS ENABLE USERS TO:

- MOUNT TWO LIGHTS OR A LIGHT WITH MODIFIER FROM JUST ONE STAND
- MOVE TIGHTLY INTO A CORNER
- POSITION ON STAIRS OR UNEVEN TERRAIN

**ALL STAINLESS STEEL  
CONSTRUCTION WITH  
OPTIONAL BLACK COATING**

ROCKY MOUNTAIN LEG AND TURTLE BASE  
COMBINED INTO ONE STAND



**PATENTED**

**40" STAINLESS STEEL C-STAND WITH GRIP ARM KIT**

**FEATURES:**

- Heavy-duty, anti-rust stainless steel
- Removable turtle base
- Second junior receiver on leg (patent pending feature)
- Includes 40" (102cm) 3-section riser and 20" (51cm) single section riser
- All sections spring loaded
- Leg leveler for uneven surfaces or stairs
- Pull release knob locks legs into open or closed position
- Dual baby pin mount possibilities
- 8mm – 35mm Gobo head clamping range
- Gobo head clamps lined with EPDM rubber to prevent damage on thin walled tubes
- Blue padded handle for comfortable grip

**INCLUDES:**

- (1) Removable stainless steel turtle base
- (1) Stainless steel 3-section riser
- (1) 20" (51cm) Stainless steel single section riser
- (1) Removable junior to baby pin
- (1) 40" (102cm) Stainless steel grip arm
- (1) Aluminum gobo head
- (1) Aluminum gobo clamp
- (1) Removable hanging hook

**40" (102CM) FEATURES:**

- Maximum load: 25 lbs. (11.3kg)
- Minimum working height: 53" (135cm)
- Maximum working height: 114" (290cm)
- Footprint: 25" (64cm)
- Collapsed leg width: 22" (56cm)
- Total weight: 24 lbs. (10.9kg)

**20" (51CM) FEATURES:**

- Maximum load: 25 lbs. (11.3kg)
- Minimum working height: 36" (91cm)
- Maximum working height: 64" (163cm)
- Footprint: 25" (64cm)
- Collapsed leg width: 22" (56cm)
- Total weight: 17 lbs. (7.7kg)

**40" (102cm) STAINLESS STEEL C-STAND WITH GRIP ARM KIT**

CSS-200S

**40" (102cm) STAINLESS STEEL C-STAND**

CSS-100S

**40" (102cm) STAINLESS STEEL 3-SECTION RISER**

CSS-UP200S

**20" (51cm) STAINLESS STEEL C-STAND WITH GRIP ARM KIT**

CSS-20

**20" (51cm) STAINLESS STEEL 3-SECTION RISER**

CSS-UP20020

**JUNIOR TO BABY PIN**

CS-BP

**40" (102cm) STAINLESS STEEL C-STAND WITH GRIP ARM KIT**

CSS-200S-50

**+ FREE #50 WHITE SEAMLESS PAPER BACKGROUND PAPER**

**PATENTED**

**40" BLACK COATED STAINLESS STEEL C-STAND WITH GRIP ARM KIT**

**40" (102cm) BLACK COATED STAINLESS STEEL C-STAND WITH GRIP ARM KIT**

CB-600K

**40" (102cm) BLACK COATED STAINLESS STEEL C-STAND**

CB-600

**40" (102cm) BLACK COATED STAINLESS STEEL 3-SECTION RISER**

CB-600UP40

**20" (51cm) BLACK COATED STAINLESS STEEL C-STAND WITH GRIP ARM KIT**

CB-600-20K

**20" (51cm) BLACK COATED STAINLESS STEEL C-STAND**

CB-600-20

**20" (51cm) BLACK COATED STAINLESS STEEL 3-SECTION RISER**

CB-600UP20



INCLUDES PADDED HANDLE AND CABLE HOOK



HEAVY DUTY BLACK PAINT REDUCES REFLECTIVITY





## DOUBLE RISER STAND

NEW INNOVATIVE PRODUCT

**PATENT PENDING**

Easily maneuverable double-column stand can serve as a multi-purpose studio accessory to hang backgrounds, reposition multiple lights while keeping the same configuration, mount reflectors or function as a boom holder with a low center of gravity. Provides a very safe and stable base. Folds down compactly.

### FEATURES:

- Locking 3" (8cm) casters on legs
- Cross braces unfold easily from one side with sliding hinge
- Stainless steel construction
- Opens to 63" W x 116" H (160cm x 295cm)
- Collapses to 13" W x 49" H (33cm x 124cm)

**DOUBLE RISER STAND**

60RDS



**COLLAPSES TO 13" WIDE**



## ROLLING BASE

NEW INNOVATIVE PRODUCT

**PATENT PENDING**

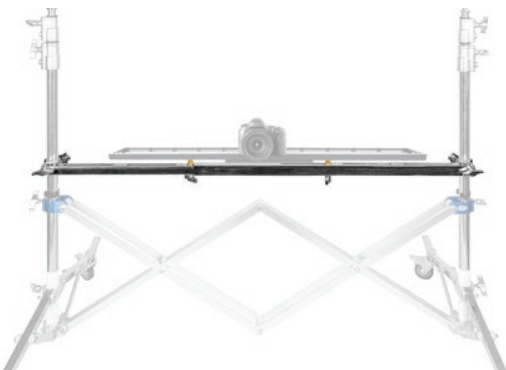
Easily maneuverable stand base with two junior receivers. This patent pending feature allows a user to mount multiple lights or accessories from one stand. Use with any standard C-stand riser or mount a light ultra-low to the ground using just a baby pin, to allow for easy repositioning around set. Extendable legs make it a very stable stand for mounting equipment with an off-center weight such as an overhanging light or microphone. The base folds up compactly while remaining rollable even in the collapsed position.

### FEATURES:

- Stainless steel
- 2 Junior receivers
- Low angle 56° spread between each leg
- Extendable legs
- 3/8" Stud receivers on legs give extra mounting flexibility
- Collapsed: 11" wide x 26" long x 6.5" tall (28cm x 66cm x 17cm)
- Open: 27" wide x 25" long (69cm x 64cm)
- Legs extended: 45" wide x 44" long (114cm x 112cm)

**ROLLING BASE**

CS-BASE



## TELESCOPING SUPPORT RAIL

The uniquely designed Savage Telescoping Support Rail enables users to attach lights, modifiers and camera sliders of almost any size between two c-stands or the patent pending Savage Double Riser Stand. Achieve a lower position to the ground than typically possible with most tripods or support stands by clamping the support rail at any height onto the riser columns. Or mount the Telescoping Support Rail atop baby pins and raise it to the height desired. Add more studs to mount multiple light sources. Used with the Savage Double Riser Stand to enable slider rails, dolly systems, or banks of lights to be quickly and effortlessly moved around the studio as one unit.

### FEATURES:

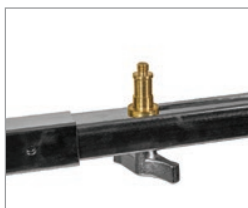
- Stainless steel construction
- Minimum collapsed length: 38" (97cm)
- Maximum extended length: 65" (165cm)
- Minimum mounting width: 12" (30cm)
- Maximum mounting width: 60" (152cm)
- Clamps to tubing diameters between 32mm - 40 mm
- Includes (2) 5/8" studs with 3/8" male threading for mounting sliders and lights

**TELESCOPING SUPPORT RAIL**

TSA60



HEAVY DUTY HARDWARE



ADJUSTABLE SLIDER MOUNTS





**PATENTED**

**PRO DUTY STEEL DROP STAND™**

The Savage Pro Duty Drop Stand™ combines the indoor and outdoor capabilities of a heavy-duty, chrome plated steel light stand with the ability to open and close its legs automatically. No need to collapse the stand before moving between speakers stands, stage props or other tight spaces... our Drop Stand™ technology uses gravity to do the job for you. Just lift the stand to collapse the tripod and drop back on to a surface to reopen! Rugged steel construction will hold even for the most demanding applications.

**7' SPECIFICATIONS:**

- 3 Section stand
- Maximum height: 7' (2.14m)
- Minimum height: 38" (96cm)
- Folded length: 38" (96cm)
- Footprint: 28" (71cm)
- Weight: 11 lbs.
- Maximum load: 30 lbs.
- Top: 3/8" stud

**10' SPECIFICATIONS:**

- 3 Section stand
- Maximum height: 10' (3.04m)
- Minimum height: 49" (124cm)
- Folded length: 49" (124cm)
- Footprint: 37" (94cm)
- Weight: 17 lbs.
- Maximum load: 15 lbs.
- Top: 3/8" stud

**KIT FEATURES:**

- KT FEATURES:**
- 10' Savage Steel Drop Stand™ with grip arm, 2 gobo heads and carry bag
  - Max usable grip height: 150" (380cm)
  - Grip arm length: 48" (120cm)
  - Grip clamp material: Aluminum
  - Grip arm: Chrome plated steel tubing
  - Second fixed grip for securing flags, scrims, reflectors & accessories
  - Maximum grip arm load: 5 lbs. (2.2kg)
  - Weight: 22 lbs. (10kg)

**7' STAND** (213CM)  
**10' STAND WITH BOOM KIT** (305CM)  
**CASTERS** (3PK)

**DSS-7**  
**DSS-10-SB**  
**CS-C**

NEW INNOVATIVE PRODUCT

**PATENT PENDING**

**QUICK STEP STAND BASE**

Make quick lighting adjustments singlehandedly with the locking foot pedal!



**LIGHT STAND SPECIFICATIONS:**

- All metal construction
- Weight: 10 lbs. (4.54kg)
- Length: 23" (58cm)
- Receiver width: 5/8" (16mm) accommodates virtually all standard grip arms and 5/8" adapters
- Receiver length: 2" (5cm)
- Closed leg width: 2-3/8" (6cm)
- Open leg width: 29" (74cm)
- 3/8" Female threads on both legs for extra low angle lighting possibilities

**QUICK STEP BASE STAND** SRS



**ENABLES EXTRA LOW ANGLE LIGHTING POSSIBILITIES**  
 (ARM AND LIGHT SOLD SEPARATELY.)



NEW INNOVATIVE PRODUCT  
**PATENT PENDING**

**V-HOLD FOR LIGHT MODIFIERS**

Double-arm holder articulates into a V-shape for unprecedented mounting options for scrims, reflectors and even cut-to-size diffusion materials like Savage Translum®. Mount vertically or horizontally to a baby pin or 5/8" stud. A baby pin will accommodate both the V-Hold and a light from one stand.

- FEATURES:**
- Holds panels as wide/tall as 94" (2.39m)
  - Clamps on frames up to 1.6" (42mm)
  - Mount horizontally or vertically
  - Collapsed length: 25.5" (65cm) long
  - Weights 3.5 lbs. (1.6kg)

**V-HOLD FOR LIGHT MODIFIERS V-POLE**



**40" STEEL GRIP ARM WITH GOBO HEAD CLAMP**

- FEATURES:**
- Length: 40" (106cm)
  - Stainless steel plated steel tubing
  - Spigot ends with 3/8" male thread
  - Includes an aluminum gobo head and our unique gobo clamp to more easily secure reflectors, scrims, flags and more
  - Weight: 4 lbs. (2kg)

**40" (102cm) STEEL GRIP ARM WITH GOBO HEAD AND CLAMP**

CS-AGC

**40" (102cm) BLACK COATED STEEL GRIP ARM WITH GOBO HEAD AND CLAMP GOBO HEAD CLAMP**

CB-AGC  
CS-GC



**TRIPLE MOUNT RACK**

Mount up to three light heads from one stand. Ideal for use with Savage C-Stands.

- FEATURES:**
- (3) Top baby pins
  - (3) 5/8" Bottom receivers
  - Durable stainless steel
  - Measures 22" (56cm) long
  - Baby pins evenly spaced 9.75" (25cm) apart
  - Weights 5 lbs. (2.27kg)

**TRIPLE MOUNT RACK LS-TMR**



**BOOM CLAMP FOR C-STANDS**

Convert any 20" or 40" riser into a heavy duty boom. Ideal for converting the Savage Rolling Base into a heavy duty rolling boom.

**BOOM CLAMP CS-BCL**



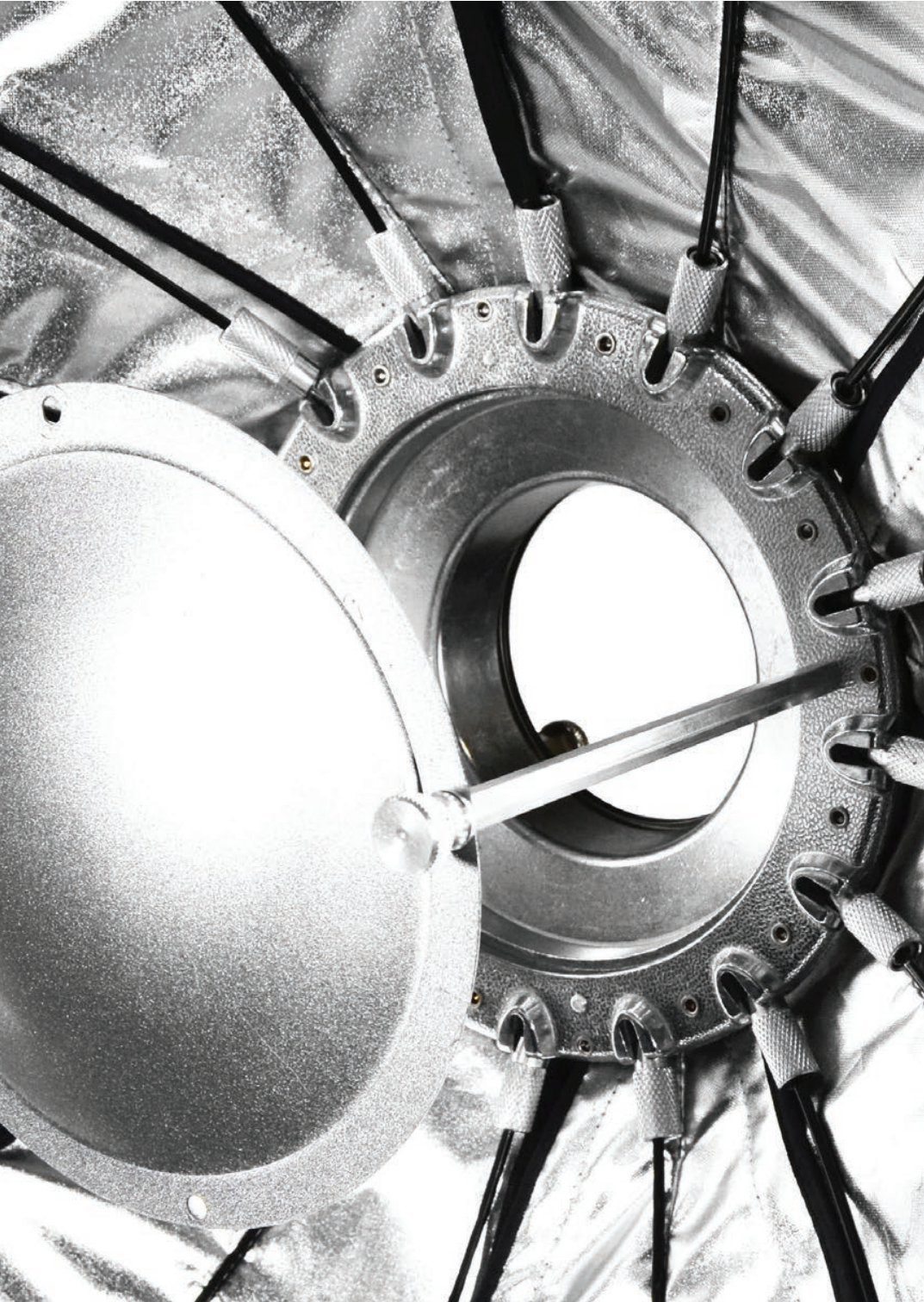
**SUPER CLAMP**

A versatile clamp used for securing lights, modifiers, cameras and many more production tools. Includes a 5/8" reversible stud adapter with 1/4"-20 and 3/8"-16 threads.

**SUPER CLAMP SC-100**



# STUDIO EQUIPMENT



Photographers and videographers rely on Savage studio equipment for their dependability and value. We offer an extensive line of studio and location equipment, including light modifiers from small to large, patented design light stands for rugged terrain and core accessories like gaffer tape and clamps. Background stand styles run from portable and lightweight to multi-support bar systems for heavy and wide backdrops.

# MULTIFLEX

## LIGHT STAND

Nothing gets in the way with the Savage MultiFlex Light Stand. Whether you need to set up your lights in the corner of a small office, the middle of a city street staircase, on a grassy hill or up against the side of a bus, it'll go wherever you need it to get the perfect shot.

6' MULTIFLEX LIGHT STAND MF-6  
 10' MULTIFLEX LIGHT STAND MF-10



### FEATURES:

- Third leg can be individually adjusted from base for setup on uneven surfaces or tight spaces
- All legs include telescoping sections and flip locks for further individual adjustments
- Rubber footing increases grip on ground surface
- Large footprint makes stand wind-resistant
- Includes bubble level to ensure level setup
- All 3 upright stand sections are air-cushioned
- Wide, flat stand base provides added stability when a small footprint is required
- Velcro strap attached for secure transport
- Steel 5/8" double stud with 1/4"-20 / 3/8" threads
- Nylon carry bag with foam padding provides convenient transportation and storage

### MULTIPLE UNIQUE USES WITH MULTIFLEX



CORNERS



UNEVEN TERRAIN



UNDER FURNITURE



STAIRS



# DROP STAND™

## EASY SET LIGHT STAND

The Drop Stand™ by Savage features unique auto-collapse and extend legs. Simply place the stand on the ground to extend the legs for secure use. Pick the stand up, and the legs will retract automatically to allow for quick and easy repositioning of lighting when moving between groups and in tight spaces. No more bending down to adjust locks.

### FEATURES:

- Gently push down to automatically extend legs, pick up to automatically retract legs
- Reversible 1/4"-20 and 3/8" stud adapter usable in either the top or side of stand
- Air dampened to prevent accidental equipment crashes while lowering
- Aluminum collars

#### 7' STAND FEATURES:

- Max load at full height: 12 lbs.
- Min height: 35" (90cm)
- Folded length: 33" (84cm)

**7' STAND** (2.13m) DS-007

#### 9' STAND FEATURES:

- Max load at full height: 16 lbs.
- Min height: 43" (109cm)
- Folded length: 41" (104cm)

**9' STAND** (2.74m) DS-009

#### 13' STAND FEATURES:

- Max load at full height: 15 lbs.
- Min height: 47" (119cm)
- Folded length: 45" (114cm)

**13' STAND** (3.96m) DS-013



### PATENTED



LEGS EXTEND & RETRACT AUTOMATICALLY WHEN PICKED UP AND PUT DOWN



### CONVERTIBLE DROP STAND™ & BOOM ARM

The unique tilt mechanism used in the Savage Convertible Drop Stand™ & Boom Arm allows use as either a 12' Drop Stand™ easy-open light stand or as a medium-duty boom. The combination of a boom and light stand that can be quickly set up in either configuration, combined with the quick repositioning abilities of our exclusive Drop Stand™ legs make this a must-have for photographers on-the-go.

#### LIGHT STAND SPECIFICATIONS:

- 4 Section
- Maximum height: 12' (3.6m)
- Minimum usable height: 51" (129cm)
- Collapsed length: 47" (119cm)
- Footprint: 32" (81cm)
- Air dampened in 2 sections
- Maximum load: 10 lbs

#### BOOM SPECIFICATIONS:

- Maximum usable boom length: 60" (152cm)
- Minimum usable boom length: 8" (20cm)
- Maximum load: 5 lbs.

#### INCLUDES:

- (1) Convertible 12' (3.6m) light stand/boom
- (1) Counter balance sand bag
- (1) Padded carry bag

**CONVERTIBLE DROP STAND™ & BOOM ARM**

CS-CBL



#### ALUMINUM LIGHT STAND

- Max height: 8' (2.44m) or 10' (3.05m)
- Air cushioned
- 1/4"-20 & 3/8" Threaded stud

**8' LIGHT STAND**    LS-C8  
**10' LIGHT STAND**    LS-C10AC



#### HEAVY DUTY LIGHT STAND

- Max height: 10' (3.05m) or 13' (3.96m)
- Air cushioned
- 1/4"-20 & 3/8" Threaded stud

**10' LIGHT STAND**    LS-B10AC  
**13' LIGHT STAND**    LS-B13AC





### MODMASTER™ MULTI-FABRIC OCTAGONAL SOFTBOX

The Savage ModMaster™ Multi-Fabric Softbox was designed to create extreme flexibility in a single light modifier. The photographer on-the-go can turn their light into a soft, warm or high contrast light source while only needing to carry and set up one softbox. Attach grid accessory if greater directional light control is desired. Whether you seek multiple effects or the increased directional light of a grid, it's all at your finger tips in one bag. The bag is designed so that the user can leave the ModMaster™ partially assembled for fast and easy on location set up.

**FEATURES:**

- White softbox cover for the softest and diffused directional light
- Create a high contrast directional light source while also increasing your light output by applying the silver inserts or use the gold side for a warm look
- Fast set up speeding with Bowens attachment (adapters for most other strobes sold separately)

<b>35" MULTI-FABRIC SOFTBOX</b>	(89cm)	SB-35
<b>59" MULTI-FABRIC SOFTBOX</b>	(150cm)	SB-59
<b>78" MULTI-FABRIC SOFTBOX</b>	(198cm)	SB-78



REVERSIBLE REFLECTIVE PANELS



### MODMASTER™ OCTAGONAL SPEEDLIGHT BEAUTY DISH

Easily convert your octagonal softbox to a beauty dish in minutes. The unique design collapses for storage but sets up fast. The included universal speedlight adapter adapts to any speedlight. Remove the adapter and use with any studio strobe brand with a Bowens front mount. The silver interior maximizes light output but can also be cooled down with the front diffuser. Attach included grid for a more directional light source.

<b>36" OCTAGONAL SPEED LIGHT BEAUTY DISH</b>	(91cm)	BD-36
<b>48" OCTAGONAL SPEED LIGHT BEAUTY DISH</b>	(122cm)	BD-48



USE AS SOFTBOX OR BEAUTY DISH



### MODMASTER™ SPEEDLIGHT SOFTBOX

The Modmaster™ Adaptable Speedlight Softbox is a very easy-to-open, versatile softbox, complete with a detachable speedlight adapter. Handhold with the comfort grip handle or attach to any light stand with a 5/8" stud. Remove the speedlight adapter and the softbox can attach to any studio strobe with the included Bowens mount. When your photo shoot is done, the modifier collapses down in seconds into a single piece for easy storage.

Extra feature: Attach as many as 5 speedlights and mount an umbrella (not included) to the adapter when high power is needed.

<b>25" ADAPTABLE SPEEDLIGHT SOFTBOX</b>	SB-OCT65
<b>35" ADAPTABLE SPEEDLIGHT SOFTBOX</b>	SB-OCT90



SPEEDLIGHT ADP-SL

### MODIFIER ADAPTERS

NOT FOR USE WITH THE MODMASTER™ ADAPTABLE SPEEDLIGHT SOFTBOX.



ELINCHROM ADP-EC



BRONCOLOR ADP-BRB



BRONCOLOR IMPACT, VISATEC ADP-BRS



BALCAR/WHITE LIGHTNING ADP-BC



**TRANSPARENT UMBRELLA**

36" (91cm) PUR-36T  
 43" (109cm) PUR-84T  
 72" (182cm) PUR-86T



**TRANSPARENT DEEP UMBRELLA**

65" (165cm) PUR-65T



**BLACK/WHITE UMBRELLA**

36" (91cm) PUR-36WB  
 43" (109cm) PUR-84WB



**BLACK/WHITE DEEP UMBRELLA**

65" (165cm) PUR-65WB



**UMBRELLA SOFTBOX**

36" (91cm) USB36  
 43" (109cm) USB43



**UMBRELLA SOFTBOX BOUNCE**

36" (91cm) USB36B  
 43" (109cm) USB43B



**DIFFUSER COVER**

65" (165cm) PUR-COVDIV



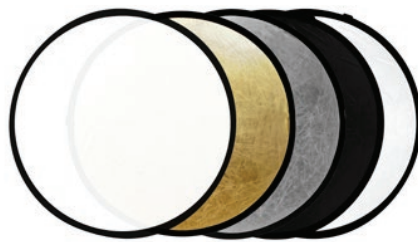
**BOUNCE PANEL**

65" (165cm) PUR-COVBNC



**BLACK/SILVER UMBRELLA**

36" (91cm) PUR-36SB  
 43" (109cm) PUR-84SB  
 72" (182cm) PUR-86S



**5-IN-1 REFLECTOR**

22" (55cm) ROUND 5-IN-1 REFLECTOR RF5-122  
 32" (81cm) ROUND 5-IN-1 REFLECTOR RF5-132  
 43" (109cm) ROUND 5-IN-1 REFLECTOR RF5-143  
 36 X 48" (91cm x 121cm) 5-IN-1 REFLECTOR RF5-13648  
 40 X 60" (101cm x 152cm) 5-IN-1 REFLECTOR RF5-14060



## BACKGROUND LEADER BAR

A one-piece aluminum bar that quickly and easily snaps to the bottom edge of paper, vinyl, and cloth backgrounds. The weight of the leader bar reduces ripples and draping, prevents curling, and helps position the background for a perfect sweep. All single Background Leader Bars include a free roll of #01 Super White Seamless Background Paper.

Available in packs of 3 or individually with a free roll of #1 Savage Super White Seamless Paper.

### FEATURES:

- One-piece aluminum bar
- Snaps open & close

**SMALL LEADER BAR** 4.8' (136cm) LB153  
INCLUDES FREE 53"X36' #1 SUPER WHITE SEAMLESS PAPER ROLL

**MID-SIZE LEADER BAR** 7.2' (218cm) LB186  
INCLUDES FREE 86"X36' #1 SUPER WHITE SEAMLESS PAPER ROLL

**LARGE LEADER BAR** 8.9' (272cm) LB112  
INCLUDES FREE 107"X36' #1 SUPER WHITE SEAMLESS PAPER ROLL

**SMALL LEADER BAR 3PK** 4.8' (136cm) LB53-3  
**MID-SIZE LEADER BAR 3PK** 7.2' (218cm) LB86-3  
**LARGE LEADER BAR 3PK** 8.9' (272cm) LB107-3

\*3PKS DO NOT INCLUDE PAPER



### GAFFER TAPE

Savage Gaffer Tape is available in standard matte black, gray, chroma green & white, in 1" and 2" options. The cloth backing with polyethylene coating is heat-resistant to 175° Fahrenheit for up to three hours. Blended synthetic resin & natural rubber compound allows for non-transferring adhesion. Always a clean removal with no residue.



#### WHITE

4 PACK	1" x 55 YARDS (25mm x 50m)	T-GW4-1
20 PACK	1" x 55 YARDS (25mm x 50m)	T-GW20-1
4 PACK	2" x 55 YARDS (50mm x 50m)	T-GW4
20 PACK	2" x 55 YARDS (50mm x 50m)	T-GW20

#### GREEN

4 PACK	1" x 55 YARDS (25mm x 50m)	T-GN4-1
20 PACK	1" x 55 YARDS (25mm x 50m)	T-GN20-1
4 PACK	2" x 55 YARDS (50mm x 50m)	T-GN4
20 PACK	2" x 55 YARDS (50mm x 50m)	T-GN20

#### BLACK

4 PACK	1" x 55 YARDS (25mm x 50m)	T-GB4-1
20 PACK	1" x 55 YARDS (25mm x 50m)	T-GB20-1
4 PACK	2" x 55 YARDS (50mm x 50m)	T-GB4
20 PACK	2" x 55 YARDS (50mm x 50m)	T-GB20
20 PACK MINI	2" x 4 YARDS (50mm x 3.6m)	T-M20

#### GRAY

4 PACK	1" x 55 YARDS (25mm x 50m)	T-GG4-1
20 PACK	1" x 55 YARDS (25mm x 50m)	T-GG20-1
4 PACK	2" x 55 YARDS (50mm x 50m)	T-GG4
20 PACK	2" x 55 YARDS (50mm x 50m)	T-GG20

### SPRING CLAMPS

An essential tool for any seamless paper user. Clamp the backdrop roll to your support stand to keep the paper from unfurling during a photo shoot.



4" SPRING CLAMP	50 PACK	C-4-50
6" SPRING CLAMP	20 PACK	C-6-20

### SEAMLESS ACCESSORY KIT

The Savage Seamless Paper Background Accessory Kit includes two mini 2" x 4yds rolls of black gaffer tape, and one 4" spring clamp.



SEAMLESS ACCESSORY KIT	AP-3
------------------------	------

### ALUMINUM CORE

This rigid aluminum core is meant to be used with Savage Infinity Vinyl Backdrops. Simply insert the aluminum tube into the existing corrugated core to increase stability and eliminate sagging. 2.25" Outside diameter / 2" Inner diameter



ALUMINUM CORE	9' (2.75m)	C-09
ALUMINUM CORE	10' (3.04m)	C-10FT



### SEAMLESS PAPER PRO STORAGE RACK

A professional and durable storage rack designed for paper and other backdrop rolls that is ideal for studios where presentation is key, even in storage areas. A minimalistic arm pulls out and locks back with a magnetic latch to secure each backdrop roll in place against your wall. Made from all aluminum construction and must be securely anchored to the wall using the included set of screws.

**FEATURES:**

- Aluminum construction
- Holds up to 6 rolls
- 4" (10cm) Holder diameter
- Fits up to 107" x 36' (2.72m x 11m) backdrop rolls
- Measures 28.5" wide x 21" tall (72cm x 53cm)

**SEAMLESS PAPER PRO STORAGE RACK D-BH**

KEEP YOUR STUDIO CLEAN & BEAUTIFUL, EVEN IN STORAGE AREAS!



### SEAMLESS PAPER STORAGE CLIP

Hard-working photo backdrops need a place to call home when not in use. Our Seamless Paper Storage Clip provides an easy-to-use solution that protects rolls from wear and tear and keeps them organized too. Flexible polyurethane is sturdy and allows for easy insertion and removal. Each set of two seamless paper holders stores up to 12 rolls. Multiple sets can be mounted side by side for quick color inventory.

**FEATURES:**

- Flexible yet durable polyurethane organizes and protects
- Two to a set
- Multiple sets can be mounted side by side along any suitable wall space
- Mounts to wall with durable, long-lasting adhesive strips
- Holds up to 107"x36' rolls
- 33" x 6" x 3" (84cm x 15cm x 8cm)

**SEAMLESS PAPER STORAGE CLIP D-TPC12**



### SEAMLESS STORAGE RACK / FLOOR DISPLAY

Holds twelve 53" Rolls (sold separately).  
15"w x 36"h x 12"d (38.1cm x 91.4cm x 30.5cm)

D-125312



### TRANSLUM FLOOR DISPLAY

Holds twelve Translum rolls (sold separately).  
15"w x 36"h x 12"d (38.1cm x 91.4cm x 30.5cm)

D-125312T



### PRINTED FLOOR DISPLAY

Holds twelve 53" Printed Paper rolls (sold separately).  
15"w x 36"h x 12"d (38.1cm x 91.4cm x 30.5cm)

D-125312PB



### ECONOMY BACKGROUND STAND

Ideal for the student or part-time photographer. Collapsible design is easy to set up without an assistant. Supports lightweight backgrounds up to 10' (3.05m) wide x 8' (2.44m) tall.

**FEATURES:**

- Max weight limit: 15 lbs.
- Weighs: 13 lbs.
- Steel construction
- Matte black finish
- Extends from 46" (1.17m) to 10' 4" (3.15m) wide and 48" (1.22m) to 7' 9" (2.36m) high
- No tools required
- Carry bag included

<b>ECONOMY BACKGROUND STAND</b>	60099
<b>REPLACEMENT UPRIGHT</b> - EXTENDS TO 7' 9" (2.36m)	07
<b>REPLACEMENT CROSSBAR</b> - OPENS TO 10' 4" (3.14m) , COLLAPSES TO 46" (1.17m)	08

### PORT-A-STAND BACKGROUND STAND

A versatile and portable backdrop stand that collapses for easy carrying, making it ideal for both studio and location shoots. This strong yet lightweight stand can accommodate up to 107" x 36' (2.72m x 11m) seamless paper or cloth backgrounds.

**FEATURES:**

- Max weight limit: 25 lbs.
- Weighs: 17 lbs.
- Matte black finish
- Aluminum construction
- Extends from 52" (1.32m) to 10' 7" (3.23m) wide and 42" (1.07m) to 9' 7" (2.92m) high
- 41" (1.04m) Large footprint for added stability
- Crossbar sections twist and lock for easier extension for extra rigidity and less sag
- Air-cushioned upright stand sections for easy adjustments
- Upright stands employ 1/4"-20 / 3/8" adapter and can be used as light stands
- No tools required
- Carry bag included

<b>PORT-A-STAND BACKGROUND STAND</b>	62037
<b>PORT-A-STAND WITH WHITE 53" PAPER KIT</b>	62037-50K
<b>PORT-A-STAND REPLACEMENT CARRYING BAG</b>	06-17
<b>REPLACEMENT UPRIGHT</b> - EXTENDS TO 9' 7" (2.92m)	04-17
<b>REPLACEMENT CROSSBAR</b> - OPENS TO 10' 7" (3.23m), COLLAPSES TO 52" (1.32m)	05-17



PS2-17 PS3-17 PS4-17 PS5-17

### MULTIPLE POLEVAULT BACKGROUND STAND

An exceptionally strong backdrop stand that can support either three rolls of 107" x 36' (2.7m x 11m) background paper simultaneously or one roll of 140" (3.56m) wide background paper.

**FEATURES:**

- Max weight limit: 25 lbs. (Crossbar 2 & 3), 70 lbs. (Crossbar 1)
- Weighs: 33 lbs.
- Matte black finish
- Aluminum construction
- Includes 3 standard crossbars that extend from 65" (1.65m) to 10' 4" (3.15m) and support up to 25 lbs. each, and 1 extra long crossbar that extends from 60" (1.52m) to 12' 7" (3.84m) and supports up to 70 lbs.
- No tools required

<b>MULTIPLE POLEVAULT BACKGROUND STAND</b>	63151
<b>REPLACEMENT UPRIGHT</b> - EXTENDS TO 9' 4" (2.84m)	01
<b>REPLACEMENT CROSSBAR 1</b> - OPENS TO 12' 7" (3.84m) , COLLAPSES TO 60" (1.52m)	03
<b>REPLACEMENT CROSSBAR 2 &amp; 3</b> - OPENS TO 10' 4" (3.14M) , COLLAPSES TO 46" (1.17M)	08



MP2 MP3





### PROMO BACKGROUND STAND

Ideal for photo booths, tradeshow and special events. Two slim but stable feet allow the stand to be set up virtually anywhere, unlike others with large extending footprints. A horizontal crossbar attached at the top and bottom of the stand can be used to clamp a banner or photography backdrop to, keeping it taut, wrinkle-free and photo-ready.

**FEATURES:**

- Max weight limit: 15 lbs.
- Weighs: 13 lbs.
- Aluminum tubing and collars with steel base
- Matt black finish
- Wide but slim footprint
- Twist locking sections
- Extends from 68" (1.73m) to 10' 5" (3.18m) and 39" (99cm) to 8' 5" (2.57m) high
- Carry bag included

**PROMO BACKGROUND STAND      601010**



### 12 X 12 BACKGROUND STAND

An very strong backdrop stand that can support large backdrops up to 12' (3.66m) wide and 12' (3.66m) high.

**FEATURES:**

- Max weight limit: 20 lbs.
- Weighs: 17 lbs.
- Aluminum construction
- Matte black finish
- Extends to 12' (3.66m) wide x 12' (3.66m) high
- Reinforced four-section crossbar reduces sag
- Crossbar also usable with only two or three sections when 6' (1.83m) or 9' (2.74m) wide applications are preferred
- Upright stand footprint measures 35" (89cm)
- Supports large muslin or cloth backdrops and up to 107" x 36' (2.72m x 11m) paper or 9' x 10' (2.74m x 3.05m) vinyl backdrop rolls
- No tools required
- Carry bag included

*MULTI-SECTION, SNAP-TOGETHER CROSSBAR ALLOWS FOR SIMPLE EXTENDING & SHORTENING OF CROSSBAR*

**12' X 12' BACKGROUND STAND      601212**



### UNIVERSAL BACKGROUND STAND

An advantageous support system for large studios. With 3 upright stands and interlocking crossbars, the stand can extend out to 24' (7.32m) for extra-wide theater productions or large commercial shoots. A unique middle bracket allows for the stand to be set up in a corner as well. Easily pivot and reposition stands to achieve any angle you desire.

**FEATURES:**

- Max weight limit: 20 lbs. per section
- Weighs: 25 lbs.
- Aluminum construction
- Matte black finish
- Extends to 24' (7.32m) wide x 10' (3.05m) high
- Air dampened in all sections
- Reinforced crossbar consists of four sections to reduce sag
- Crossbar also usable with only two or three sections when 6' (1.83m) or 9' (2.74m) wide applications are preferred
- Use as double-wide stand, corner stand or configure custom angles per your needs
- Can support multiple backgrounds, making it ideal for quick scene changes
- No tools required
- Carry bag included

*MULTI-SECTION, SNAP-TOGETHER CROSSBAR ALLOWS FOR SIMPLE EXTENDING & SHORTENING OF CROSSBAR*

**UNIVERSAL BACKGROUND STAND      601024**



## PRODUCT PRO LED LIGHT TABLE

The Savage Product Pro LED Light Table is every commercial photographer's solution to capturing professional quality product photography without the hassle of compiling an array of complicated lighting and background gear for small subjects. Simply flip a switch and the powerful LED light strips under the table brightly illuminate evenly across the table, creating an instant high-key background. Each rechargeable LED light contains 36 LED chips with a CRI of 91, and are mounted on heavy-duty flexible arms, providing quality backlight, highlights, and under lighting where needed. Sized to 22" x 22" (55.8cm x 55.8cm)

### INCLUDES:

- (1) LED light table (CRI 91)
- (1) Accessory tray
- (4) Rechargeable 36 bulb LED lights
- (4) AC power cords for charging lights
- (4) Diffuser socks
- (4) 20" Flexible arms
- (1) Nylon protective sleeve



**PRODUCT PRO LED LIGHT TABLE**    LED-PT22-N

TAKE PERFECT PRODUCT PHOTOS

## PRODUCT PHOTOGRAPHY EFFECTS KIT

*For use with Savage Product Pro Light Table (not included).* Expand the versatility of the Savage Product Pro LED Light Table with additional background options, reflective mylar and acrylic ice cubes.

### FEATURES:

- Multiple background material options
- Reflective mylar for creative reflections
- Background stand extends from width: 16.5" - 30.5" / height: 19" - 33"
- Accommodates small & large light table
- Get creative and backlight or under light objects by cutting included material

### KIT INCLUDES:

- (1) Table Top Background Stand
- (12) Acrylic Ice Cubes
- (2) 23" x 40" Translum™ background (heavyweight)
- (2) 23" x 40" Translum™ background (lightweight)
- (4) 23" x 40" Black Velveteen Background
- (4) 23" x 23" Silver Mylar film
- (1) Padded carry bag

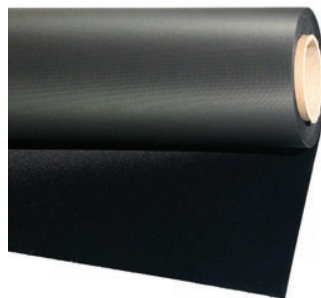
**EFFECTS KIT**    EFF-PT22



## ROYAL MARBLE PAPER

Marbled effect, random, non-repeating design in soft colors. Rolls are corewound in a 78" x 36' (2m x 11m) size and ideal for tabletop and portrait photography.

**RED**    RM 0778



## MIDNIGHT BLACK VELVETEEN

Savage Midnight Black Velveteen is a non-reflective velvet-like tabletop background material with a plastic backing. Sized to 58" x 20' (1.32m x 6m) and wound on a sturdy core.

**BLACK VELVETEEN ROLL**    522020





### MOBILE VLOGGING KIT WITH MICROPHONE

**INCLUDES:**

- Supercardioid unidirectional microphone with shoe mount, wind sock and male 3.5 pc out cord
- Rechargeable 36 chip daylight balanced (5800K) LED video light
- Adjustable cell phone holder (fits most phones)
- Tilttable tabletop tripod
- Bluetooth remote shutter release for iPhone/Android

**FEATURES:**

- Supercardioid
- Electret condenser
- Sensitivity: -47db ± 3dB
- Impedance: 2000 ohms
- Frequency response: 20 hz - 18 khz
- For DSLRs, mobile phones, PCs, laptops
- Stand collapses to pistol grip, tilttable for landscape / portrait
- 5800K LED light measures 365 lux at 1m with CRI: 85

**VLOGGER MICROPHONE      MIC-VLOGGER-KIT**



### DUAL HEAD MICROPHONE

The Savage Dual Head Microphone allows you to record two subjects with only one microphone. Works with GoPro, cell phones, DSLRs and other video cameras for maximum flexibility. The extra long cord allow the subjects to be separated by as much as 24'! Low profile design allows the subject to be heard without the microphone being visually distracting.

**DUAL HEAD MICROPHONE      MIC-DL**



### 2-PACK LITHIUM ION BATTERIES

Batteries for Savage LED204, LED-ELSM, LED-ELLG, RGB-VL, LED-RLPS, RGB-RL, LW-RGB Lithium Ion, 7.2 Volts, Fully decoded, Dual voltage. Charger included.

**2PK 4400MAH - 31.6 WATT HRS      REPLACES SONY NP-F750/770, NP-F550      BNP-F750**  
**2PK 6600MAH - 31.6 WATT HRS      REPLACES SONY NP-F750/770, NP-F550, NP-F970      BNP-F970**

### SAVAGE POWER V-MOUNT LITHIUM ION BATTERY

Savage Power high powered Lithium Ion battery For LED video lights, cameras, monitors & accessories up to 160W.



**FEATURES:**

- Travel charger included
- V-Mount rechargeable battery
- Memory free
- Built in intelligent control circuit
- LED Power level indicator
- 14.8V 12800mAh 190Wh
- Continuous power: 160W
- Continuous current: 14A

**DEVICE RUN TIME EXAMPLES:**

- 100W LED Video Light: 2 Hours
- Macbook Pro: 6 Hours
- 17" PC Laptop: 2 Hours

**NEW**  
**190W SAVAGE POWER LITHIUM ION BATTERY      BNP-BP190V**  
**230W SAVAGE POWER LITHIUM ION BATTERY      BNP-230WH**

### SAVAGE POWER V-MOUNT VOLTAGE CONVERTER

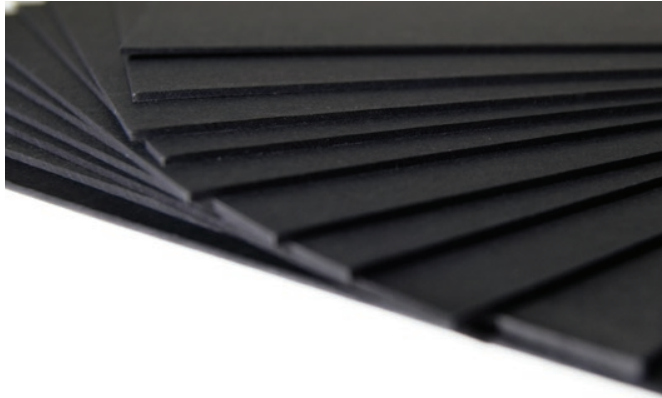
Converts any V-mount battery to 120V to power anything up to 110W. For use with any 120 volt appliance up to 12 amp draw.



**FEATURES:**

- Plug and play design
- Snap in the battery
- Plug in the device
- Turn on the power

**SAVAGE POWER VOLTAGE INVERTER      BNP-PI-110**  
**GOLD MOUNT INVERTER      BNP-PI-GM**

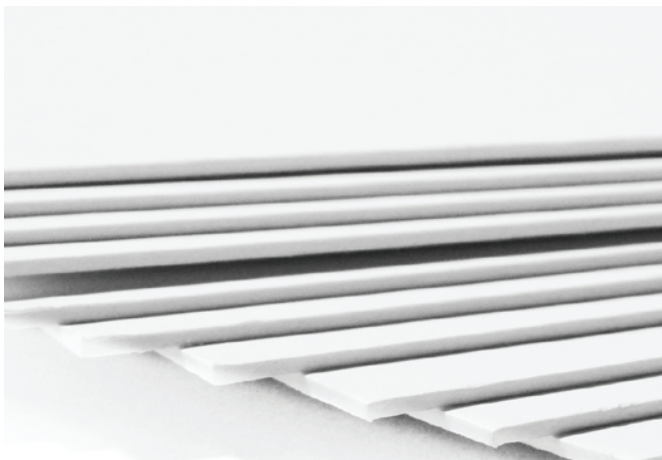


## PRESENTATION MOUNT BOARDS

### TRUBLACK PRESENTATION BOARD

A neutral deep board that is significantly blacker than standard presentation board. With a solid black core and black facing on both sides, our TruBlack Black Presentation Mount Board surrounds images with the deepest, richest black available. Ideal for surface mounting prints and artwork. Tape and adhesives work well with this board. Thickness: 1/16" / 40pt. / 4ply

11" x 14" (10sht/pk)	100 / CTN.	414002
15" x 20" (10sht/pk)	100 / CTN.	414003
16" x 20" (10sht/pk)	100 / CTN.	414004
20" x 30"	25 / CTN.	414007
32" x 40"	25 / CTN.	414008



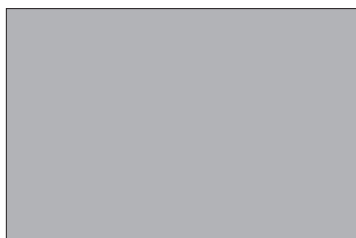
### TRUWHITE PRESENTATION BOARDS

TruWhite is white core board lined on both sides with super white paper, ideal mounting board for photos and finished artwork. The bright TruWhite surface provides a maximum contrast making it easy to adapt to several medias along with graphic layouts. Tape and adhesives work well with this board. Thickness: 1/16" / 40pt. / 4ply

11" x 14" (10sht/pk)	100 / CTN.	18012
15" x 20" (10sht/pk)	100 / CTN.	18013
16" x 20" (10sht/pk)	100 / CTN.	18014
20" x 30"	25 / CTN.	18015
32" x 40"	25 / CTN.	18017

## CUT SIZE MAT BOARD

Savage Cut-Size Mat Board is available in sizes 8x10, 11x14 and 16x20 in packages of ten. Sizes 20x24, 30x40 and 32x40 available in bulk pack cartons. Made from the finest pulp and acid free papers. Thickness: 1/16" / 50pt. / 4ply



### WHITE SMOOTH CUT SIZE MAT BOARD

8" x 10" WHITE SMOOTH	200 / CTN	15011
11" x 14" WHITE SMOOTH	100 / CTN	15012
16" x 20" WHITE SMOOTH	100 / CTN	15014
20" x 24" WHITE SMOOTH	50 / CTN	15015
32" x 40" WHITE SMOOTH	25 / CTN	15017

### GRAY SMOOTH CUT SIZE MAT BOARD

8" x 10" GRAY SMOOTH	200 / CTN	15351
11" x 14" GRAY SMOOTH	100 / CTN	15352
16" x 20" GRAY SMOOTH	100 / CTN	15354
20" x 24" GRAY SMOOTH	50 / CTN	15355
32" x 40" GRAY SMOOTH	25 / CTN	15357

### BLACK SMOOTH CUT SIZE MAT BOARD

8" x 10" BLACK SMOOTH	200 / CTN	15401
11" x 14" BLACK SMOOTH	100 / CTN	15402
16" x 20" BLACK SMOOTH	100 / CTN	15404
20" x 24" BLACK SMOOTH	50 / CTN	15405
32" x 40" BLACK SMOOTH	25 / CTN	15407



FOLLOW US ON SOCIAL MEDIA!

Get set tips, discover new gear & find inspiration for your next photo shoot!



#SHOOTWITHSAVAGE  
#STYLEYOURSEAMLESS  
#SAVAGEUNIVERSAL



Part of The Vitec Group

